

A Brief History of Roses

Roses are a beautiful genus of plants with over 77 species grown over the last thirty years at the Georgeson Botanical Garden. According to fossil evidence, the rose plant is approximately thirty-five million years old. Since then, nearly 150 species have been grown and are spread throughout the northern hemisphere, from Alaska to North Africa. Rose cultivation began roughly five-thousand years ago and popular interest in the breeding and hybridization of roses led to the many varieties that exist today. The American Rose Society (ARS) classifies roses into three categories based on botanical and evolutionary progression which include the Species (Wild) Roses, Old Garden Roses, and Modern Roses.

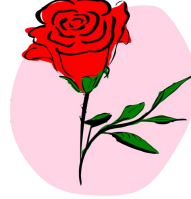
Roses are from the Rosaceae family. Rosaceae consists of herbs, shrubs, and trees with roughly 3,000 known species from 90 genera. There are several commonly known members including raspberries and blackberries (Rubus), plums, cherries, apricots, peaches nectarines, and almonds (Prunus), apples (Malus), quince (Cydonia), and of course, roses (Rosa).

Rosaceae serrated leaves are almost always deciduous and spirally whorled around the stem. In some of the woody plants within this family, sharp spines produce from the stem, commonly known as thorns. These thorns don't stop the moose from foraging on roses in the garden. The flowers bloom with five petals and they can grow as small clusters or large single blooms and vary in color from white to pink to crimson.

Rosaceae are monecious with the flowers containing both male and female reproductive parts. In roses the ovary is inferior – meaning it is positioned below the sepals and petals. The carpels are surrounded and fused to a hollow receptacle called the 'floral cup' or 'hypanthium'. When pollinated, the rose ovary will turn into a fruit known as a 'pseudocarp', more commonly identified as a rose hip.

Read more about roses in our garden blog *Realm of Roses: An Introduction to Rosa* by Shelby Reynolds MS, RDN, LD at our website www.georgesonbotanicalgarden.org.

Thank you to the contributors of this project: Janet Matheson, Katie DiCristina, Melanie Graeff, and Lacey Higham!



The Georgeson Botanical Garden relies on public donations and grants for operations, summer staffing, and maintenance. We welcome all donations to the garden. You can donate to the Georgeson Botanical Garden via the UA Foundation or through the GBG Friends. Both use your donation to directly support the Garden. Visit our website for more information.

The Garden is operated and supported by the University of Alaska Fairbanks and the Georgeson Botanical Garden Friends, a non-profit, 501(c)3, whose mission is to supports the operations of the Georgeson Botanical Garden.



GEORGESON
BOTANICAL GARDEN FRIENDS

The Garden is open
Memorial Day through Labor Day.

PO Box 757200
21800 West Tanana Drive
University of Alaska Fairbanks
Fairbanks, AK 99775

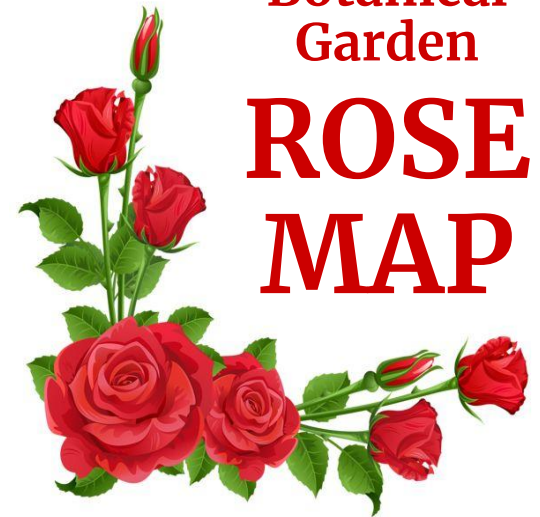
www.georgesonbotanicalgarden.org

Follow us @gbg.uaf on
Facebook and Instagram!



**Georgeson
Botanical
Garden**

**ROSE
MAP**



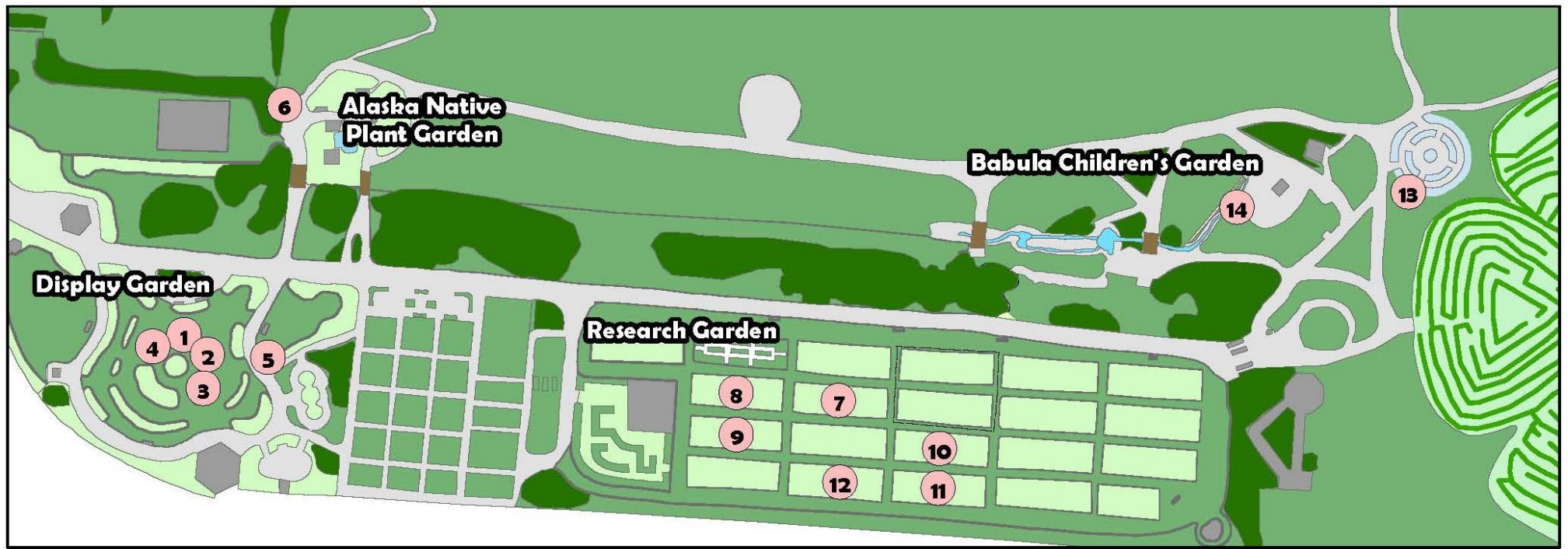
**Tour and learn about our collection
of roses in the northernmost
botanical garden in the US!**



GEORGESON
— BOTANICAL GARDEN —



**UNIVERSITY OF
ALASKA
FAIRBANKS**



Found? ✓	Number	Cultivar Name	Common Name	# of plants
-------------	--------	---------------	-------------	-------------

Display Garden

Central plots

Stop 1

	3rd & Graehl	3rd & Graehl Rose	1
--	--------------	-------------------	---

Stop 2

	Alba	Rugosa Rose	1
--	------	-------------	---

Stop 3

13169	Rugosa or Turkestan Roses	Rugosa Rose	4
-------	------------------------------	-------------	---

Stop 4

14015	Lac LaNonne	Hybrid Rose	3
-------	-------------	-------------	---

Stop 5

14777	Jens Monk	Shrub Rose Explorer Series	4
-------	-----------	----------------------------	---

Alaska Native Plants Garden

Stop 6

(East of Pavilion, adjacent to garden path)

	Prairie Venn	Hybrid Rose	3
--	--------------	-------------	---

Research Garden

Trial Plots 10, 11, 12, 14, 19, 20 respectively

Stop 7

	Dinkel		1
--	--------	--	---

Stop 8

16078	Hansa	Hybrid Rose	5
17018	Scabrosa	Hybrid Rose	5
19556	'RADsun'	Carefree Sunshine® Rose	1
19558	'DARpellerin'	Cape Diamond® shrub Rose	4

Stop 9

14722	Martin Frobisher	Shrub Rose Explorer Series	
14773	Alba Plena	Rugosa Rose	5
14777	Jens Munk	Shrub Rose Explorer Series	1
16078	Hansa	Hybrid Rose	5
17493	Glauca	Redleaf Rose	4
18996	Champlain (Explorer Series)	Shrub Rose	5

Stop 10

18725	3rd & Graehl	3rd & Graehl Rose	5
15741	Snow Pavement	Hybrid Rose	1

Stop 11

18731	Pearl Creek Shrub Rose	5
-------	------------------------	---

Stop 12

(Mike Salzman's Rose Garden)

15734	Hazeldean	Shrub Rose	
16072	Apart		
16078	Hansa		
14773	Alba Plena		2
17904	John Davis		
16079	George Vancouver		5
	Jens Monk	Shrub Rose Explorer Series	
	Prairie Venn	Hybrid Rose	
	Pavement Series	Hybrid Rose	

Babula Children's Garden

Stop 13

(Ted Fathauer Weather Garden, outer circle)

	Rugosa or Turkestan Roses	Rugosa Rose	80
--	------------------------------	-------------	----

Stop 14

(Water Garden, adjacent to water flume)

	Rugosa or Turkestan Roses	Rugosa Rose	10
--	------------------------------	-------------	----