

Annual Vegetable Trials 2007

AFES Variety Trial
2008-02
March 2008



Grant E.M. Matheke
Horticulturalist

Jan Hanscom
Horticulturalist

Patricia S. Holloway
Professor of Horticulture

Etta Gardiner
Greenhouse Manager

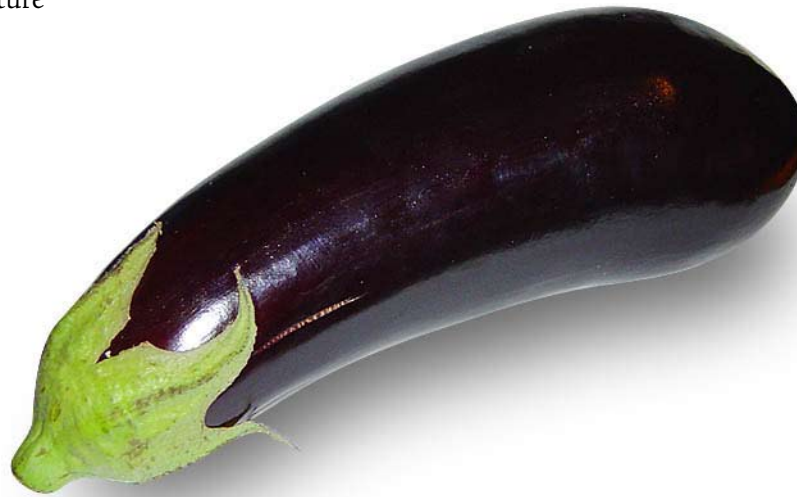
Agricultural and Forestry Experiment Station

University of Alaska Fairbanks
AFES Publications Office
P.O. Box 757200
Fairbanks, AK 99775-7200
fynrpub@uaf.edu • www.uaf.edu/snras
907.474.6923 or 907.474.5042
fax: 907.474.6184

NOTE: Variety Trials circulars are published by the Alaska Agricultural and Forestry Experiment Station to provide information summarizing research, and are usually written for a specific lay audience. Variety trials often present information about ongoing or inconclusive applied research and experiments. They may consist of secondary information or be a bulletin or journal article summary.

To simplify terminology, we may use product or equipment trade names. We are not endorsing products or firms mentioned. Publication material may be reprinted provided no endorsement of a commercial product is stated or implied. Please credit the researchers involved, the University of Alaska Fairbanks, and the Agricultural and Forestry Experiment Station.

The University of Alaska Fairbanks is accredited by the Commission on Colleges and Universities of the Northwest Association of Schools and Colleges. UAF is an affirmative action/equal opportunity employer and educational institution.



Introduction

2

Vegetable cultivar trials are conducted every year at the Alaska Agricultural and Forestry Experiment Station Georgeson Botanical Garden (64° 51'N, 147° 52'W). Trials consist of new and standard cultivars suitable for small market gardens and home gardens in the Tanana Valley, Alaska. Plot sizes are small, and results do not necessarily reflect yield and produce quality that might be expected on large farms. Positive results should be viewed as cultivars worth further testing at the great diversity of commercial and home gardens through out the Tanana Valley.

Weather data were compiled annually from a U.S. Weather Service station, elevation 475ft (145m), located approximately 350ft (107m) west of the garden. The summer was warm, especially August which was the second warmest August in the past 10 years (Tables 1 and 2). The total thaw degree days ranked the 2007 season third in total heat accumulation during the growing

season, second in the number of frost free days and first in rainfall. Precipitation was lowest in May and highest in July (Table 2).

Approximately 100 vegetable cultivars were included in the tests at the Georgeson Botanical Garden. Each cultivar is tested for at least three years as long as it is available commercially. The vegetable trials were planted from 15 May to 4 June, 2007 (Table 3.) in the Family Food Garden (map on page 16). Fairbanks silt loam soil was fertilized with 10-20-20S (4 lbs per 100 sq. ft., 195 g per sq meter) prior to planting. Broccoli, cabbage, cauliflower, head lettuce, cucurbits, peppers, tomatoes, artichokes, and eggplant were grown as seedling transplants. All others were direct seeded. Transplants were hardened off outdoors for one week prior to transplanting.

All cultivars were planted according to recommended commercial spacing guidelines (Table 3.) in unreplicated beds. Plant numbers varied according to plot size. Plots

were irrigated and hand weeded as needed throughout the summer. Rows of turnips, rutabaga and radishes were covered with Remay spun-bonded fabric to prevent root maggot damage. Harvest began in mid-June with radishes and continued three times weekly through September. Data consisted of yield as well as observations of disease, off-type plants, and deformities. Average yields are reported for cultivars tested more than one season.

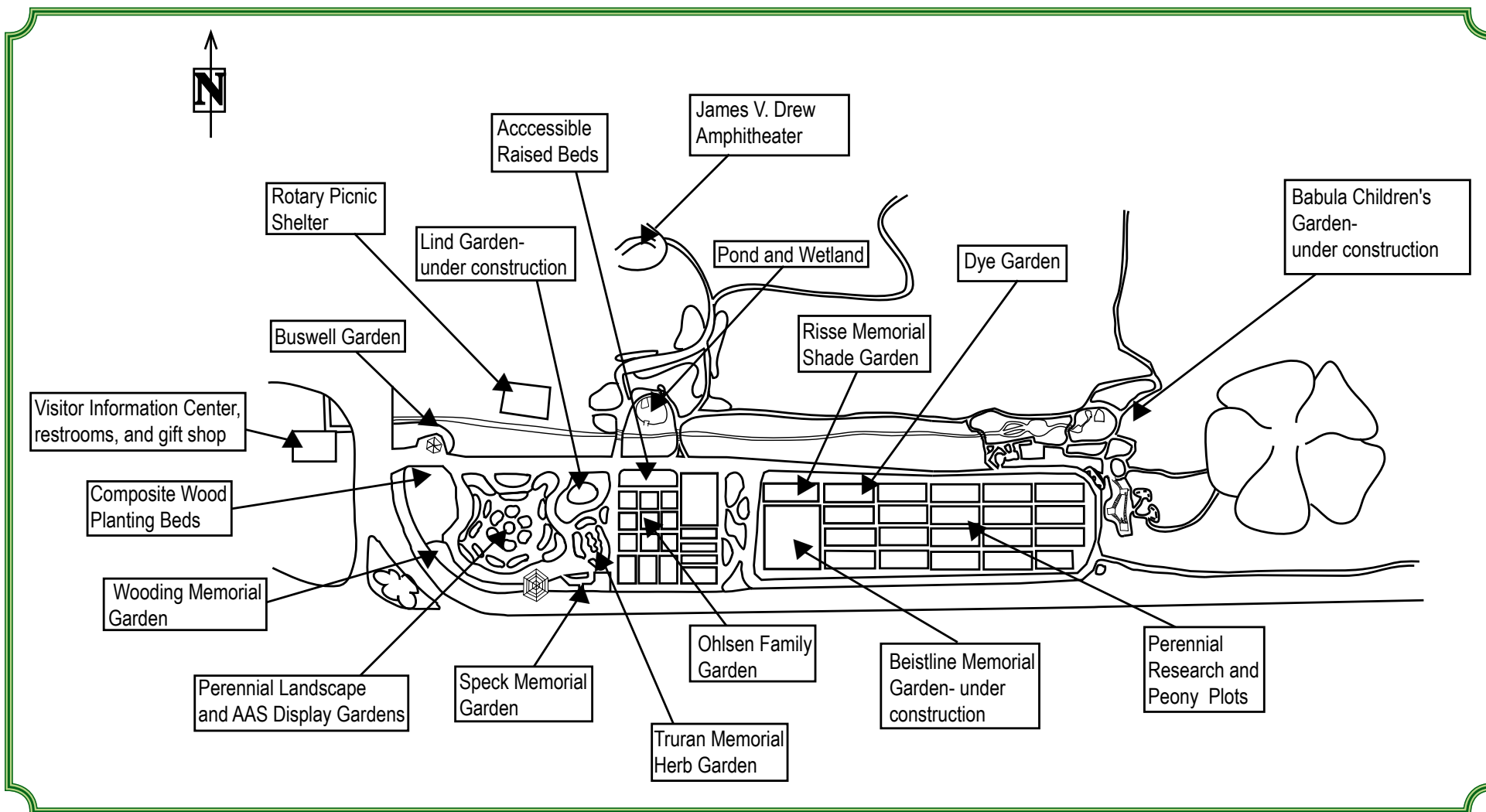
Table 1. Weather data from the U.S. Weather Service station located just west of the garden for years 1997 - 2007.

Season	1997	1998	1999	2000	2001	2002	2003	2004	2005	2006	2007
Average temperature: (°F)											
May	48	49	46	44	45	50	44	52	56	50	50
June	61	58	61	59	57	58	61	66	67	59	60
July	64	62	61	59	61	61	61	65	63	62	64
Aug	57	52	58	52	57	54	55	62	58	55	60
Sep	50	46	45	41	49	47	41	38	46	50	47
Maximum temperature (°F)	87	87	91	83	95	85	82	90	85	80	84
Growing season:											
Last frost	May 25	May 13	May 29	May 15	May 13	May 12	May 24	May 8	May 5	June 4	May 13
First frost	Aug 19	Sep 13	Sep 11	Sep 16	Sep 24	Sep 2	Sep 13	Sep 4	Sep 2	Sep 25	Sep 22
Frost free days	86	123	105	124	134	113	112	119	120	112	132
Thaw degree days*	3656	3278	3383	2943	3439	2980	3123	3751	3767	3523	3728
Rainfall (inches)	5.86	9.87	8.66	8.55	5.80	9.35	9.91	5.6	10.59	7.86	11.32
Previous winter season:											
Minimum temperature (°F)	-54	-48	-54	-50	-27	-36	-35	-45	-50	-49	-41.7
Snowfall (inches)	38.4	30.6	31.6	62.2	39.9	39.7	33.2	51.7	70.9	51.8	25.2

* Thaw degree days = Cumulative (1 May - 30 Sep) average daily temperature minus 32 °F baseline.

Table 2. Weather data summaries for growing season years 2005 - 2007.

	May			June			July			August			September		
Temperature °F	2005	2006	2007	2005	2006	2007	2005	2006	2007	2005	2006	2007	2005	2006	2007
Average daily maximum	68	63	62	73	69	72	74	71	76	69	65	71	54	61	57
Monthly high	77	75	80	84	80	84	81	83	84	85	72	84	66	69	71
Average daily minimum	43	38	38	50	48	49	51	52	52	46	45	48	38	38	37
Monthly low	31	27	28	43	30	41	39	46	44	33	36	39	28	29	22
Rainfall (inches)	1.66	0.20	0.90	2.97	1.15	2.66	4.09	3.42	4.12	0.39	2.48	1.85	1.48	0.61	1.79



Vegetable	Cultivar	Source	Years Grown	Date	Date	Spacing		IRT Mulch	Yield (lbs)	Per	Rating	Harvest Period	Comments
				Seeded	Transplant	Within Row	Between Rows						
Artichoke													
	Imperial Star	Johnny's	07	4/4	6/4	2'	2' rb	y	1.88	plant	3.5	8/13-9/20	One of two cultivars (also Green Globe) that will reliably produce artichokes when grown as an annual. Usually produces the highest yield.
Bean													
Green	Oregon 54	Nichols	07	5/15	DS	1"	3'	n	1.35	foot	2.5	7/23-8/31	
Romano	Baroma Bush Romano	Nichols	07	5/15	DS	1"	3'	n	1.94	foot	3.0	7/23-9/20	
Romano	Romano Gold	Stokes	07	5/15	DS	1"	3'	n	1.17	foot	3.0	7/23-9/4	Very nice yellow romano.
Yellow Wax	Carson	Johnny's	07	5/15	DS	1"	3'	n	1.07	foot	2.0	7/23-9/4	Some rotting beans in late August.
Beet													
	Boltardy	Denali	06, 07	5/15	DS	3-4"	3'	n	1.05	foot	2.0	8/7-8/9	Bolt resistant.
	Chioggia	Johnny's	07	5/15	DS	3-4"	3'	n	1.25	foot	3.0	7/13-8/24	Unique, multicolored when cut.
	Cylindra	Lily Miller	06, 07	5/15	DS	3-4"	3'	n	1.82	foot	3.0	7/13-8/8	Nice cylindrical shaped beet.
	Ruby Queen	Denali	06, 07	5/15	DS	3-4"	3'	n	0.98	foot	3.0	7/13-8/13	Old standard, good production.
Broccoli													
	Early Dividend	Vesey's	07	4/18	5/17	16"	3'	n	0.55	plant	3.0	7/2-7/6	Good, new, early variety; lots of laterals.
	Marathon	Johnny's	07	4/18	5/17	16"	3'	n	1.45	plant	3.5	7/9-7/16	Large, high yields.
	Shogun	Territorial	07	4/18	5/17	16"	3'	n	1.86	plant	3.5	7/16-7/18	Huge. Can reach 3-4 lbs., 14" across in Fairbanks.
Brussels Sprouts													
	Bubbles Hybrid	Territorial	06, 07	3/14	5/17	24"	3'	n	0.82	plant	2.0	7/25-9/20	About 1/2 yield of Jade Cross E in '07.
	Jade Cross E	Harris	04, 05, 07	3/14	5/17	24"	3'	n	1.62	plant	3.2	7/18-9/15	Reliable variety for the Interior.
Cabbage													
	Earliana	Burpee	07	4/18	5/17	12"	3'	n	4.45	plant	3.5	7/6-7/9	Good, small, early variety.
	Gonzales	Johnny's	07	4/18	5/17	12"	3'	n	3.20	plant	2.5	7/13-8/1	Lower yield than Earliana in '07.
	Ruby Ball	Territorial	06, 07	4/18	5/17	16"	3'	n	4.01	plant	3.3	8/3-9/7	Good, reliable, dense red cabbage.
	Savoy Express	AAS	07	4/18	5/17	12"	3'	n	3.18	plant	2.5	7/14	Tip burn, good color, some mold, very early.

Rating: 0. dead, did not germinate, total loss because of disease, etc.; 1. poor germination, susceptible to disease, insects, other problems, poor quality; 2. fair, other cultivars of its kind have been better; 3. good, worth growing, good quality; 4. outstanding, the best of its kind grown in the garden.

Vegetable	Cultivar	Source	Years Grown	Date	Date	Spacing		IRT Mulch	Yield (lbs)	Per	Rating	Harvest Period	Comments
				Seeded	Transplant	Within Row	Between Rows						
Carrot													
	Nelson	Johnny's	07	5/15	DS	1"	3'	n	0.94	foot	3.5	7/20-8/20	Excellent flavor, big 'n' tasty.
	Purple Haze	AAS	05, 06, 07	5/15	DS	1"	3'	n	0.54	foot	2.3	8/1-8/20	Poor germination in '06, purple skin, deep orange flesh.
	Rainbow	T&M	05, 06, 07	5/15	DS	1"	3'	n	0.59	foot	2.3	7/20-8/20	Poor germination in '06, mix of pastel colors.
	Thumbelina	Nichols	07	5/15	DS	1"	3'	n	0.39	foot	3.0	8/1-8/10	Early round carrot.
	Vitana	Stokes	07	5/15	DS	1"	3'	n	0.62	foot	3.0	8/1-8/24	Good production.
Cauliflower													
	Amazing	Park	04, 06, 07	4/18	5/17	16"	3'	n	2.52	plant	3.2	7/20-7/27	Holds well, large wrapper leaves make it self blanching.
	Andes	Vesey's	07	4/18	5/17	16"	3'	n	3.39	plant	3.5	7/16-7/25	Consistently high yields, large heads.
	Briljans	Stokes	07	4/18	5/17	16"	3'	n	2.51	plant	3.0	7/16-7/20	No longer available from known sources.
	Minuteman	Stokes	07	4/18	5/17	16"	3'	n	2.95	plant	3.0	7/13-7/23	Earliest in '07, nice wrapper leaves, self blanching.
Celery													
	Florida 683	Stokes	04, 05, 07	3/14	5/30	4-6"	3'	n	6.22	foot	3.3	9/4	Excellent, high yields.
	Utah 52-70R	Stokes	07	3/14	5/30	4-6"	3'	n	5.16	foot	3.5	9/4	No data '06, consistently high yields.
Cucumber													
	Cucino	Park	07	5/3	6/3	2.5'	5'	y	19.91	plant	3.0	7/25-9/10	Small 2-3" baby cukes.
	Salad Bush	Burpee	04, 06, 07	5/3	6/3	2.5'	5'	y	20.64	plant	3.2	7/30-9/10	Slicing, our favorite.
Pickling	Bush Pickle	Stokes	07	5/3	6/3	2.5'	5'	y	21.75	plant	3.0	8/10-9/20	Nice compact bush habit.
Pickling	H-19 Little Leaf	Johnny's	07	5/3	6/3	2.5'	5'	y	23.78	plant	3.0	8/10-9/20	Excellent pickling cucumber, small leaves make it easy to pick.
Eggplant													
	Casper	Territorial	07	3/14	6/4	1.5'	2' rb	y	0.30	plant	2.5	8/27-9/4	Nice pure white eggplant, lower yield than 'Snowy' or 'Tango'.
	Fairy Tale	AAS	07	3/14	6/4	1.5'	2' rb	y	1.27	plant	3.5	7/13-9/10	Pretty lavender with white streaks, high yield.
	Hansel	AAS	07	3/14	6/4	1.5'	2' rb	y	1.93	plant	3.5	7/3-9/7	High yield.

Rating: 0. dead, did not germinate, total loss because of disease, etc.; 1. poor germination, susceptible to disease, insects, other problems, poor quality; 2. fair, other cultivars of its kind have been better; 3. good, worth growing, good quality; 4. outstanding, the best of its kind grown in the garden.

Vegetable	Cultivar	Source	Years Grown	Date	Date	Spacing		IRT Mulch	Yield (lbs)	Per	Rating	Harvest Period	Comments
				Seeded	Transplant	Within Row	Between Rows						
Eggplant													
	Ichiban	Garden City	07	3/14	6/4	1.5'	2' rb	y	0.76	plant	2.5	7/3-9/10	Medium yield.
	Ravenna Hybrid	Park	07	3/14	6/4	1.5'	2' rb	y	0.45	plant	2.0	7/3-9/20	Small, single serving, green eggplant, lower yields.
	Tango	Johnny's	07	3/14	6/4	1.5'	2' rb	y	1.00	plant	3.0	7/3-9/10	Nice white eggplant, high yield.
Greens													
Chinese Cabbage	China Choy	Seeds of Change	07	5/15	DS	6-8"	3'	n	2.06	foot	2.5	7/2-7/13	Tendency to bolt.
Japanese Mustard	Komatsuna	Stokes	07	5/15	DS	6-8"	3'	n	0.62	foot	2.0	6/27-7/9	Tendency to bolt.
Oriental (Pac Choi)	Black Summer	Johnny's	05, 06, 07	5/15	DS	6-8"	3'	n	0.93	foot	2.8	7/2-7/13	Tendency to bolt.
Oriental (Pac Choi)	Joi Choi	Johnny's	05, 06, 07	5/15	DS	6-8"	3'	n	0.92	foot	2.8	7/2-7/13	Tendency to bolt.
Kale													
	Red Russian	Johnny's	07	5/15	DS	12-16"	3'	n	0.67	foot	2.0	7/16-7/27	Consistent high yields, attractive in garden, poor germination in '07.
	Redbor	Territorial	07	5/15	DS	12-16"	3'	n	0.86	foot	2.0	7/9-8/24	Poor Germination in '07.
	Winterbor	Johnny's	07	5/15	DS	12-16"	3'	n	3.15	foot	2.5	7/16-9/20	Very good, attractive, reliable kale.
Kohlrabi													
	Kolibri	Johnny's	07	5/22	DS	3-6"	3'	n	1.87	foot	3.0	7/20-8/21	Excellent purple skinned kohlrabi.
	White Vienna	Lily Miller	06, 07	5/22	DS	3-6"	3'	n	1.53	foot	2.5	7/20-8/31	
Leek													
	Arena	Vesey's	07	3/7	5/30	3"	3'	n	0.99	foot	2.0	9/4	Lower yield than others.
	Baby Lincoln	Scheepers	06, 07	3/7	5/30	3"	3'	n	2.11	foot	3.0	8/7-9/4	High yields.
	Kilima	Nichols	07	3/7	5/30	3"	3'	n	1.39	foot	3.0	9/4	Medium yield in '07.
	King Richard	Johnny's	07	3/7	5/30	3"	3'	n	1.48	foot	2.5	9/4	Nice leek, good yields.
Lettuce													
Butterhead	Ermosa	Johnny's	04, 05, 07	4/18	5/29	12"	3'	n	0.95	plant	2.0	6/22-6/29	Some tipburn.
Butterhead	Grappa Butterhead	Scheepers	05, 07	4/18	5/29	12"	3'	n	1.14	plant	3.0	7/14	Good quality.

Rating: 0. dead, did not germinate, total loss because of disease, etc.; 1. poor germination, susceptible to disease, insects, other problems, poor quality; 2. fair, other cultivars of its kind have been better; 3. good, worth growing, good quality; 4. outstanding, the best of its kind grown in the garden.

Vegetable	Cultivar	Source	Years Grown	Date	Date	Spacing		IRT Mulch	Yield (lbs)	Per	Rating	Harvest Period	Comments
				Seeded	Transplant	Within Row	Between Rows						
Lettuce													
Butterhead	Mikola	Johnny's	04, 05, 07	4/18	5/29	12"	3'	n	0.95	plant	2.0	7/2	Small, rotting. Yuck-O. Compost all. 2005 good quality.
Butterhead	Sangria	Stokes	04, 05, 07	4/18	5/29	12"	3'	n	1.03	plant	3.0	7/2-7/6	Nice butterhead, good color.
Crisphead	Burgundy Ice	Burpee Seed	04, 05, 07	4/18	5/29	12"	3'	n	2.11	plant	3.0	7/9-7/13	Little tipburn; big, tall, good color.
Crisphead	Continuity	Seeds of Change	04, 05, 07	4/18	5/29	12"	3'	n	0.92	plant	1.5	6/22-6/29	Susceptible to tipburn.
Crisphead	Crispino	Johnny's	05, 07	4/18	5/29	12"	3'	n	2.45	plant	3.0	7/6	Nice green iceberg.
Leaf	Brunia Oakleaf	West Coast	04, 05, 07	5/23	DS	10"	3'	n	2.41	foot	3.0	7/9-8/27	Very good, no rotting. No visible bugs. 2005 slight tipburn mid August.
Leaf	Cocarde	Johnny's	04, 05, 07	5/23	DS	10"	3'	n	2.58	foot	4.0	7/14-8/27	Very healthy, no rot or burn!
Leaf	Little River Blend	Territorial	07	5/23	DS	10"	3'	n	1.45	foot	2.0	7/13-8/27	No longer commonly available.
Leaf	Merlot	Cook's Garden	04, 05, 07	5/23	DS	10"	3'	n	1.60	foot	3.0	7/1-7/26	Beautiful deep red lettuce. 2005 some bolting late.
Romaine	Cimarron Red	Comstock Ferree	07	4/18	5/29	12"	3'	n	0.97	plant	2.5	6/29-7/2	Tendency to bolt.
Romaine	Devil's Tongue	Territorial	04, 05, 07	4/18	5/29	12"	3'	n	1.59	plant	2.5	7/7	Nice red color, some leaf rot.
Romaine	Outredgeous	Johnny's	04, 05, 07	4/18	5/29	12"	3'	n	1.48	plant	3.0	7/7	Nice color. Starting to bolt (7/7), little to no damage. 2005 bolting (7/7)
Pea													
	Mr. Big	Stokes	07	5/15	DS	1"	3'	n	1.61	foot	3.0	7/14-9/10	Really big, but difficult to identify mature pods.
Semi-leafless	Feisty	Johnny's	07	5/15	DS	1"	3'	n	0.69	foot	2.5	7/13-9/4	Replacement for Novella.
Semi-leafless	Survivor	Burpee	07	5/15	DS	1"	3'	n	1.33	foot	3.0	7/18-7/20	Replacement for Novella. Highest yield of semi-leafless peas.
Snap	Sugar Ann	Johnny's	07	5/15	DS	1"	3'	n	1.02	foot	3.0	7/13-9/4	
Snow	Oregon Sugar Pod II	Territorial	04, 07	5/15	DS	1"	3'	n	1.68	foot	3.3	7/13-9/7	Alexis reeeaaaalllly liked this one. Excellent snow pea.
Pepper													
	Ace	Johnny's	07	3/28	6/4	1.5'	5'	y	1.35	plant	3.5	7/13-9/10	Excellent green bell pepper for the Interior.

Rating: 0. dead, did not germinate, total loss because of disease, etc.; 1. poor germination, susceptible to disease, insects, other problems, poor quality; 2. fair, other cultivars of its kind have been better; 3. good, worth growing, good quality; 4. outstanding, the best of its kind grown in the garden.

Vegetable	Cultivar	Source	Years Grown	Date	Date	Spacing		IRT Mulch	Yield (lbs)	Per	Rating	Harvest Period	Comments
				Seeded	Transplant	Within Row	Between Rows						
Pepper													
	Biscayne	Stokes	07	3/28	6/4	1.5'	5'	y	1.55	plant	3.0	7/13-9/10	Nice pale green sweet banana-type pepper.
	Blushing Beauty	AAS	07	3/28	6/4	1.5'	5'	y	1.06	plant	3.0	7/25-9/20	Light yellow, maturing to red, bell pepper.
	Carmen	AAS	07	3/28	6/4	1.5'	5'	y	1.20	plant	3.0	7/13-9/7	Large green bell pepper, good yields.
	Cayenne	Richters	07	3/28	6/4	1.5'	5'	y	0.75	plant	3.5	7/3-9/7	Hot chili pepper.
	Early Jalapeno	Johnny's	07	3/28	6/4	1.5'	5'	y	0.45	plant	3.0	8/3-9/10	Nice early jalapeno.
	Holy Mole	AAS	06, 07	3/28	6/4	1.5'	5'	y	0.79	plant	3.0	7/30-9/12	Mildly hot pasilla (molé) pepper.
	Hungarian Semi-ht Stuffing	Nichols	07	3/28	6/4	1.5'	5'	y	0.70	plant	3.0	7/2-9/10	Replacement for 'Hungarian Yellow Hot Wax'.
	Mariachi	AAS	07	3/28	6/4	1.5'	5'	y	1.35	plant	3.5	7/9-9/10	Mildly hot cone shaped 4"x2" pepper.
	Mohawk	Park	07	3/14	5/1	Pots	Pots	y	0.57	plant	3.0	7/20-9/10	Compact bell developed for containers. Grown in two-gallon nursery containers.
	Redskin	Park	07	3/14	5/1	Pots	Pots	y	1.30	plant	3.5	7/30-9/10	Compact red bell developed for containers. Grown in two-gallon nursery containers.
	Thai Dragon	Burpee	07	3/28	6/4	1.5'	5'	y	0.75	plant	3.0	7/13-9/15	Very hot!
Pumpkin													
	Appalachian	Stokes	07	5/4	6/3	7'	7'	y	227.04	plant	3.5	9/20	Largest pumpkin in '07.
	Baby Pam	Johnny's	07	5/4	6/3	7'	7'	y	26.70	plant	3.0	9/20	Small pie pumpkin.
	Connecticut Field	Germania	07	5/4	6/3	7'	7'	y	126.22	plant	3.0	9/20	Large, consistently high yield.
	Lumina	Nichols	07	5/4	6/3	7'	7'	y	49.73	plant	3.0	9/20	Nice white-skinned pumpkin.
	Orange Smoothie	AAS	07	5/4	6/3	7'	7'	y	33.13	plant	2.5	9/20	Bright orange skins when mature. Yields lower than most.
	Racer	Johnny's	07	5/4	6/3	7'	7'	y	76.78	plant	3.0	9/20	Earliest to turn orange.
	Rock Star	Johnny's	07	5/4	6/3	7'	7'	y	139.03	plant	4.0	9/20	Excellent large pumpkin, consistently high yields.
	Sorcerer	AAS	07	5/4	6/3	7'	7'	y	228.44	plant	4.0	9/20	Excellent production from a compact vine.
Radish													
	Cabernet	Johnny's	07	5/22	DS	1"	3"	n	0.19	foot	2.0	6/13-6/22	Low yield in '07.

Rating: 0. dead, did not germinate, total loss because of disease, etc.; 1. poor germination, susceptible to disease, insects, other problems, poor quality; 2. fair, other cultivars of its kind have been better; 3. good, worth growing, good quality; 4. outstanding, the best of its kind grown in the garden.

Vegetable	Cultivar	Source	Years Grown	Date	Date	Spacing		IRT Mulch	Yield (lbs)	Per	Rating	Harvest Period	Comments
				Seeded	Transplant	Within Row	Between Rows						
Radish													
	Valentine	Stokes	07	5/22	DS	1"	3'	n	0.49	foot	3.5	7/9-7/20	Novelty green and white radish with red interior.
Daikon	Discovery	Johnny's	07	5/22	DS	2"	3'	n	2.39	foot	3.5	7/9-7/30	Highest yielding daikon radish.
Daikon	Minowase	Denali	06, 07	5/22	DS	2"	3'	n	0.27	foot	2.0	7/9-9/4	High tendency to bolt.
Daikon	Relish Cross Daikon Hybrid	Nichols	07	5/22	DS	2"	3'	n	1.19	foot	3.0	7/20-9/20	Tendency to bolt.
Rutabaga													
	The Laurentian	Stokes	07	5/22	DS	6"	3'	n	3.04	foot	3.0	7/20-8/20	
Spinach													
	Correnta	Shepherd's	04, 07	5/22	DS	4-6"	3'	n	0.47	foot	2.0	7/25-7/30	Lower yields than 'Melody.'
	Melody	Stokes	07	5/22	DS	4-6"	3'	n	0.68	foot	3.0	7/25-7/30	Most reliable for Fairbanks, resists bolting.
Squash													
Summer	Early Golden Crookneck	T&M	06, 07	5/11	6/3	3'	5'	y	4.91	plant	1.5	8/10-9/20	Late, susceptible to blossom end rot.
Summer	Magda	Park	06, 07	5/11	6/3	3'	5'	y	43.49	plant	3.0	7/6-9/20	Mediterranean type, more intense flavor.
Summer	Papaya Pear	AAS	07	5/11	6/3	3'	5'	y	32.86	plant	3.5	7/23-9/20	Interesting papaya shape, sweet mild flavor.
Summer, Zucchini	Eight Ball	Stokes	07	5/11	6/3	3'	5'	y	53.74	plant	4.0	7/3-9/20	Ball-shaped zucchini.
Summer, Zucchini	One Ball	Park	07	5/11	6/3	3'	5'	y	21.17	plant	3.0	7/3-9/7	Golden yellow ball-shaped zucchini.
Summer, Zucchini	Radiant	Stokes	05, 06, 07	5/11	6/3	3'	5'	y	37.70	plant	3.0	7/6-9/20	Very nice zucchini.
Winter	Bon Bon	AAS	04, 06, 07	5/4	6/3	4'	7'	y	30.38	plant	3.0	9/20	Sweet yellow-orange flesh, mealy, coarse, potato-like texture.
Winter	Tay Belle	Stokes	05, 06, 07	5/4	6/3	4'	7'	y	5.23	plant	3.0	9/20	Day length sensitive. Requires 16hr dark period for 14 days prior to transplanting in field to induce production of female flowers.

Rating: 0. dead, did not germinate, total loss because of disease, etc.; 1. poor germination, susceptible to disease, insects, other problems, poor quality; 2. fair, other cultivars of its kind have been better; 3. good, worth growing, good quality; 4. outstanding, the best of its kind grown in the garden.

Vegetable	Cultivar	Source	Years Grown	Date Seeded	Date Transplant	Spacing Within Row	Spacing Between Rows	IRT Mulch	Yield (lbs)	Per	Rating	Harvest Period	Comments
Swiss Chard													
	Bright Lights	Johnny's	07	5/22	DS	10-12"	3'	n	2.28	foot	3.0	7/9-9/20	Multicolor stems. Tends to bolt. Leaves smaller than other chard.
	Golden Sunrise	Johnny's	07	5/22	DS	10-12"	3'	n	0.67	foot	2.0	7/25-9/20	Lower yields than 'Bright Lights.'
Tomato													
	Jolly	AAS	05, 07	3/21	5/1	Pots	Pots	n	2.09	plant	2.0	7/27-9/10	Container tomato. Grown in four-gallon nursery containers.
	Sugary	AAS	05, 07	3/21	5/1	Pots	Pots	n	1.58	plant	2.0	7/6-9/4	Container tomato. Grown in four-gallon nursery containers.
Turnip													
	Tokyo Cross	Burpee	07	5/22	DS	4"	3'	n	1.72	foot	3.0	7/9-8/20	Nice small white turnip. High yields.
	White Lady	Stokes	07	5/22	DS	4"	3'	n	1.73	foot	3.0	7/14-9/15	Nice white turnip, similar to 'Tokyo Cross.'

10

Seed and Plant Sources

The list does not include all possible seed and plant sources. The list reflects sources from which the Georgeson Botanical Garden has received seeds/plants for the 2007 vegetable trials. No endorsement of companies should be implied by those listed, nor criticism intended of those not listed.

ALASKA SOURCES

Denali Seed, PO Box 111425, Anchorage AK 99511, www.denaliseed.com

COMMERCIAL WHOLESALE AND RESEARCH SOURCES

(seeds and plants not sold directly to the public)

'AAS' All American Selections, 1311 Butterfield Rd Suite 310, Downer's Grove IL 60515, www.all-americanselections.org

RETAIL SOURCES OF PLANTS/SEEDS

Comstock Ferree & Co., 263 Main St, Wethersfield CT 06109, www.comstockferree.com

Cook's Garden, PO Box 535, Londonderry VT 05148, www.cooksgarden.com

Garden City Seeds, 5045 Robinson Cyn Rd. Ellensburg, WA 98926, www.gardencityseeds.net

Germania Seed Co., 5978 N Northwest Hwy, Chicago IL 60631, www.germaniaseed.com

Harris Seeds, PO Box 24966, Rochester NY 14624-0966, www.harrisseed.com

John Scheepers Kitchen Garden Seeds, 23 Tulip Dr PO Box 638, Bantam CT 06750, www.kitchengardenseeds.com

Johnny's Selected Seeds, 1 Foss Hill Rd, Albion ME 044910, www.johnnyseeds.com

Lilly Miller, 1340 Treat Blvd., Suite 650 Walnut Creek, CA 94597, www.lillymiller.com

Nichols Garden Nursery, 1190 N Pacific Hwy, Albany OR 97321, www.gardennursery.com

Park Seeds, 2 Parkton Ave, Greenwood SC 29649, www.parkseed.com

Richters, 357 Highway 47, Goodwood ON LOC 1A0 Canada, www.richters.com

Seeds of Change, PO Box 15700, Santa Fe NM 87501, www.seedsofchange.com

Shepherd's Garden Seeds, 30 Irene St, Torrington CT 06790, www.shepherdseeds.com

Stokes Seeds, PO Box 548, Buffalo NY 14240, www.stokeseeds.com

Territorial Seed Co., PO Box 157, Cottage Grove OR 97424, www.territorial-seed.com

'T&M' Thompson & Morgan Seed Co., Box 1308, Jackson NJ, www.thompson-morgan.com

Vesey's Seeds, Ltd., PO Box 9000, Calais ME 04619-6102, www.veseys.com

W. Atlee Burpee & Co., 300 Park Ave, Warminster PA 18991, www.burpee.com

West Coast Seeds, 3925 64 St, Delta BC V4K3N2 Canada, www.westcoastseeds.com

Rating: 0. dead, did not germinate, total loss because of disease, etc.; 1. poor germination, susceptible to disease, insects, other problems, poor quality; 2. fair, other cultivars of its kind have been better; 3. good, worth growing, good quality; 4. outstanding, the best of its kind grown in the garden.



*Without our dedicated volunteers, continued growth
and success of the Georgeson Botanical Garden
would not be possible.*

**A big thank you to our
2007 volunteers!**

11

*To join these valued people, call Jan Hanscom at
474-6921*

Walt Babula, Kay Barboza, Kathy Baum, Bev Byington, Carolyn Chapin, Olga Cook, Virginia Damron, Susan Dearborn, Donna Dinsmore, Rae Dinsmore, Lindsay Douglass, Barbara Ebbesson, Pauline Fusco, Brook Gamble, Phyllis Haggland, Judy Harris, Shirley Harris, Kate Hedstrom, Betty Higbie, Victoria Hill, Helen Howard, Ron Inouye, Ted Kegler, Mark Kochenbach, Dee King, Joanne Klumb, Kim Kortenhof, Susan Kerndt, Sherry Lewis, Susan Lightbody, Zoe Marshall, Gail Mayo, Tina and Monique McGraw, Rose Meier, Andee Mitchell, Sue Moser, Marsha Munsell, Arlie Nethken, Carolyn Nethken, Amy Nye, Peggy O'Neal, Mary Parsons, Sherill Peterson, Emily Reiter, Ann Roberts, Betsy Robertson, Jennifer Rohrs-Richey, Lou Rowinski, Kathy Seim, Annie Sherman, Libby Silberling, Melody Springer, Ann Swift, Dida Uotila, Eileen VanWyhe, Maggie Waite, Judy Weber, Mary Youngman, Susie Zimmerman, UAF Spring Fest student volunteers, Rick Dennie and Boy Scout Troop 1, University Park 2nd grades, Dr. Babula's crew, Girls Scout Troop 678, 4-H Cloverbud Camp, and the Junior Master Gardener 4-H club.

**Special thanks to our partners and volunteers who
support the Garden with seeds and other donations:**

All America Selections, Flower and Vegetable Seeds
Goldsmith Seeds, Flower seeds
Kieft Seeds, Flower seeds
PanAmerican seeds, Flower seeds
Risse Greenhouses, Plants and supply discounts
USDA Plant Introduction Stations, NC7, Iowa State Univ., Plants and seeds

Photos from Wikipedia.