

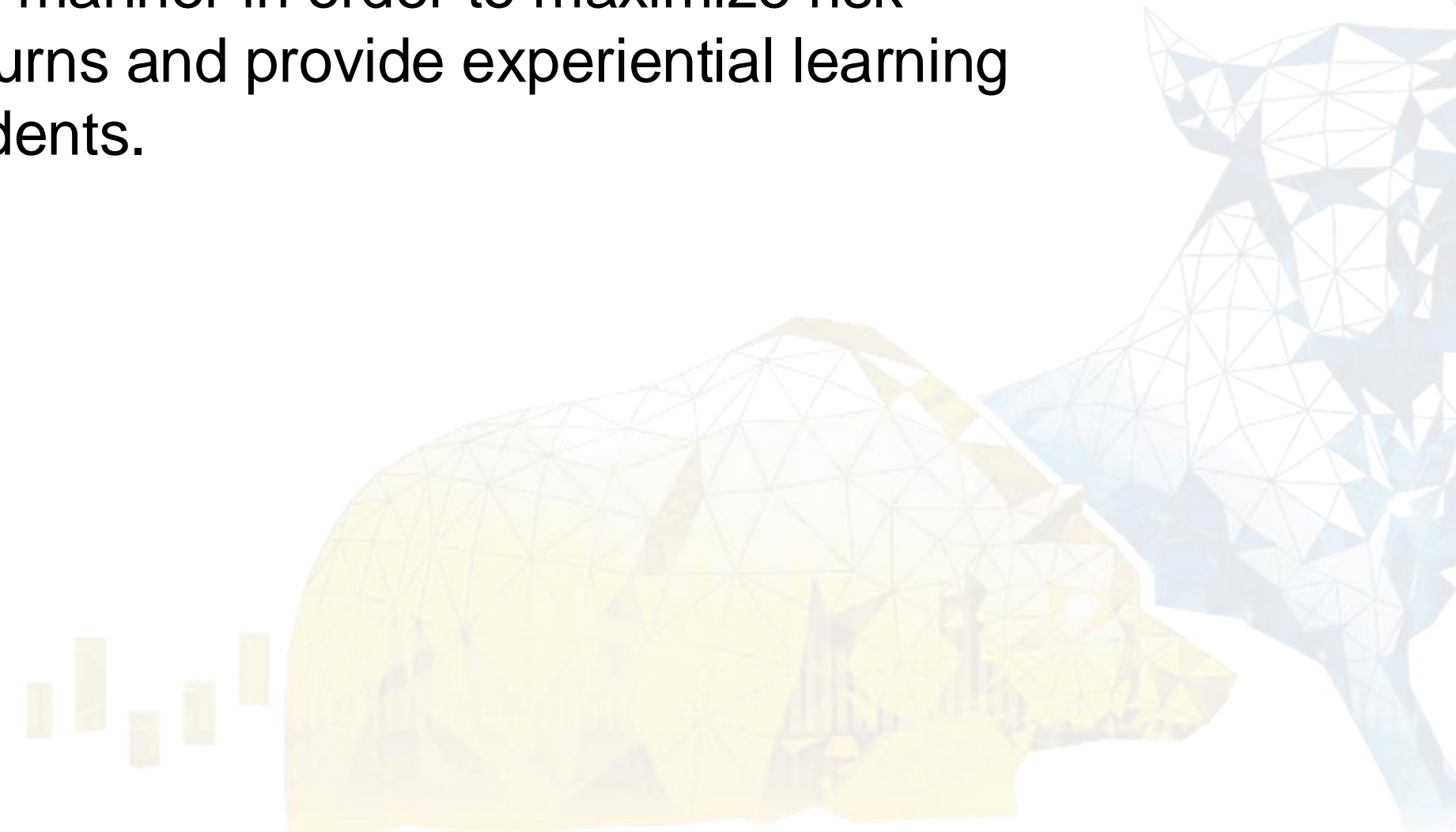
Student Investment Fund Young Alumni Board Presentation 2024 Fall Semester



Introduction/Mission Statement



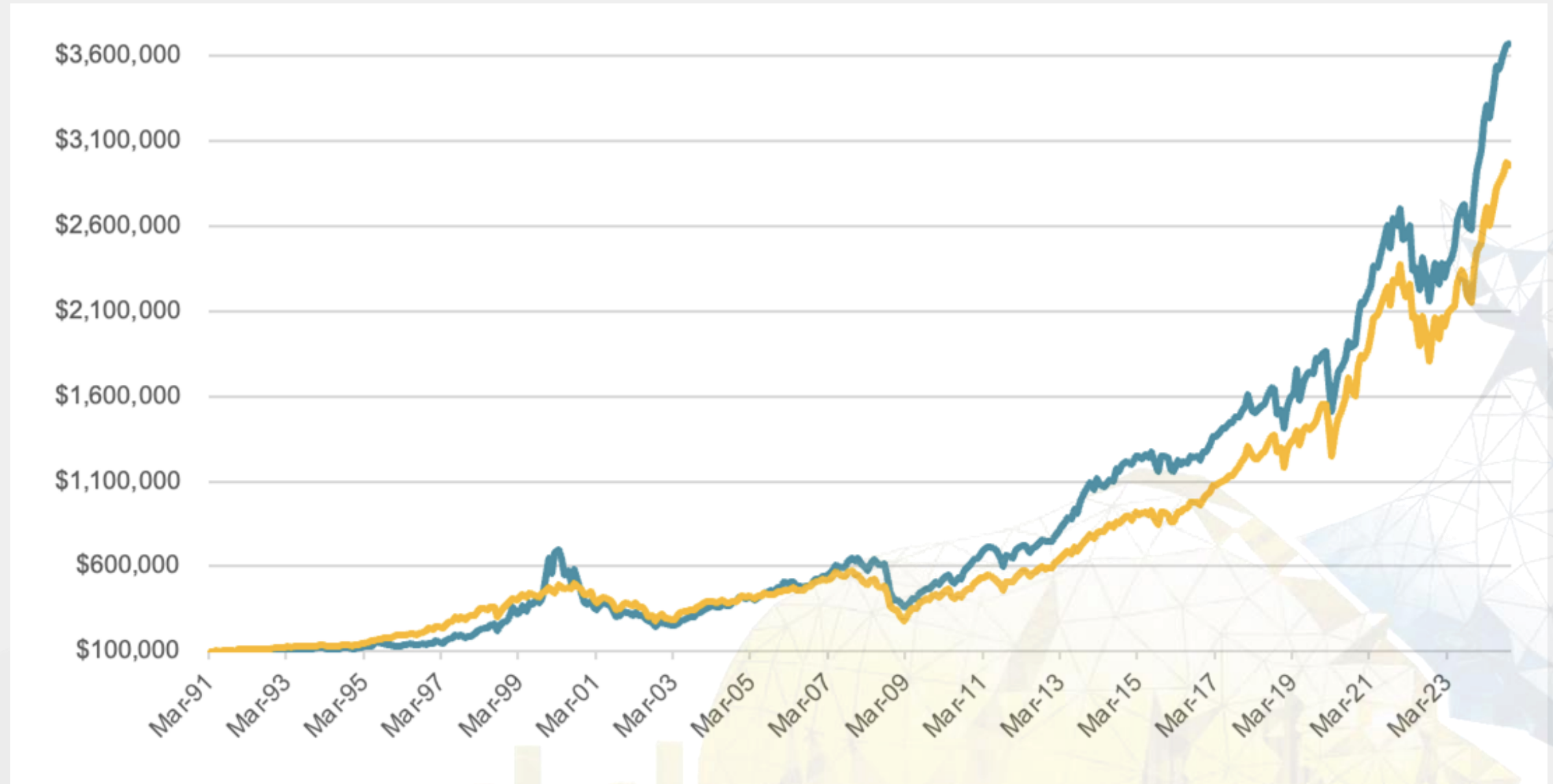
The Student Investment Fund Class manages the University of Alaska Foundation funds in a professional manner in order to maximize risk-adjusted returns and provide experiential learning for UAF students.



Growth since inception

— SIF — S&P 500

\$100,000 invested in 1991 would be worth \$3.7M today



Portfolio Statistics

Current value of fund

\$3 Million

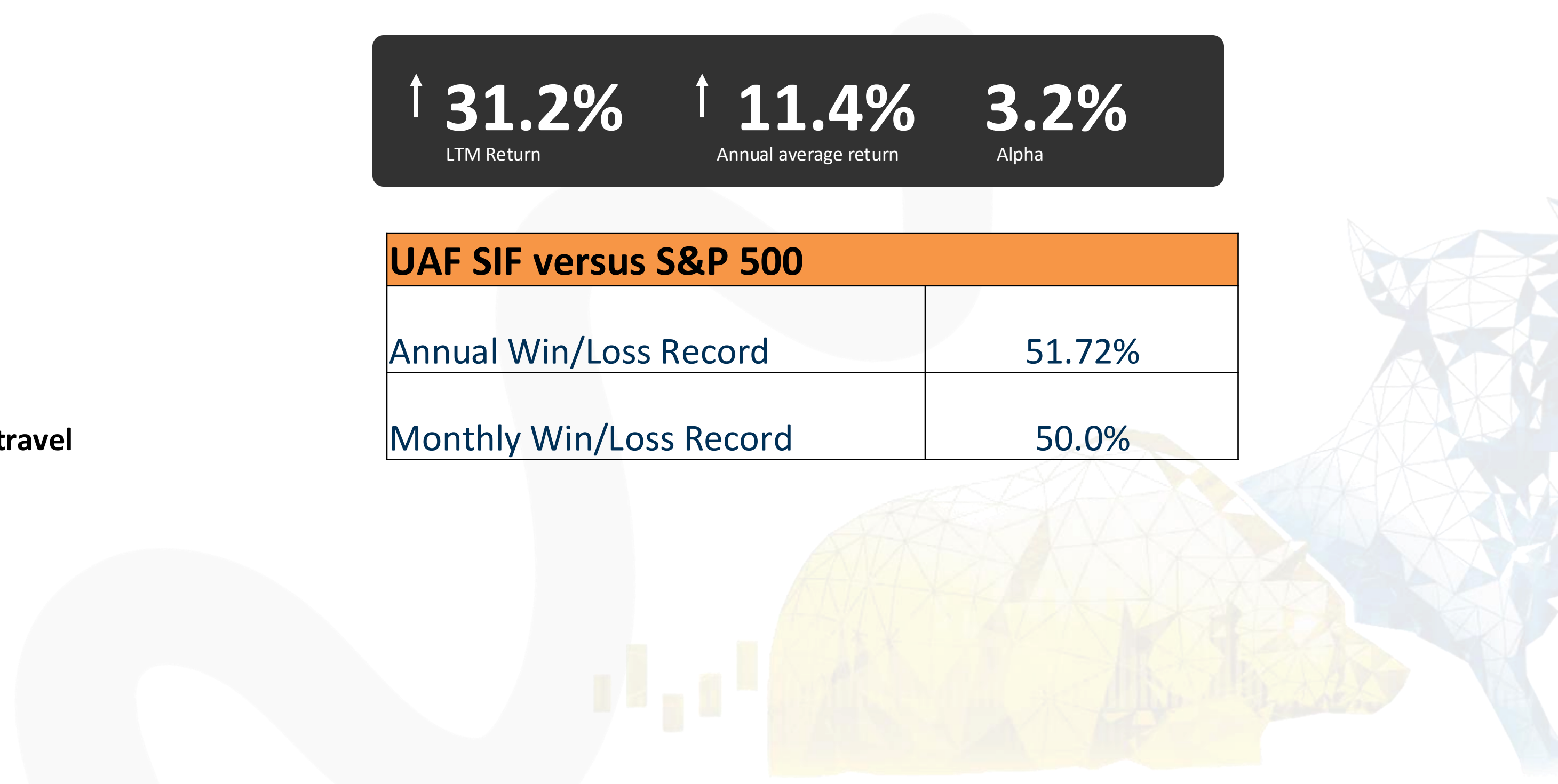
Awarded more than

\$200,000

for scholarships & student travel

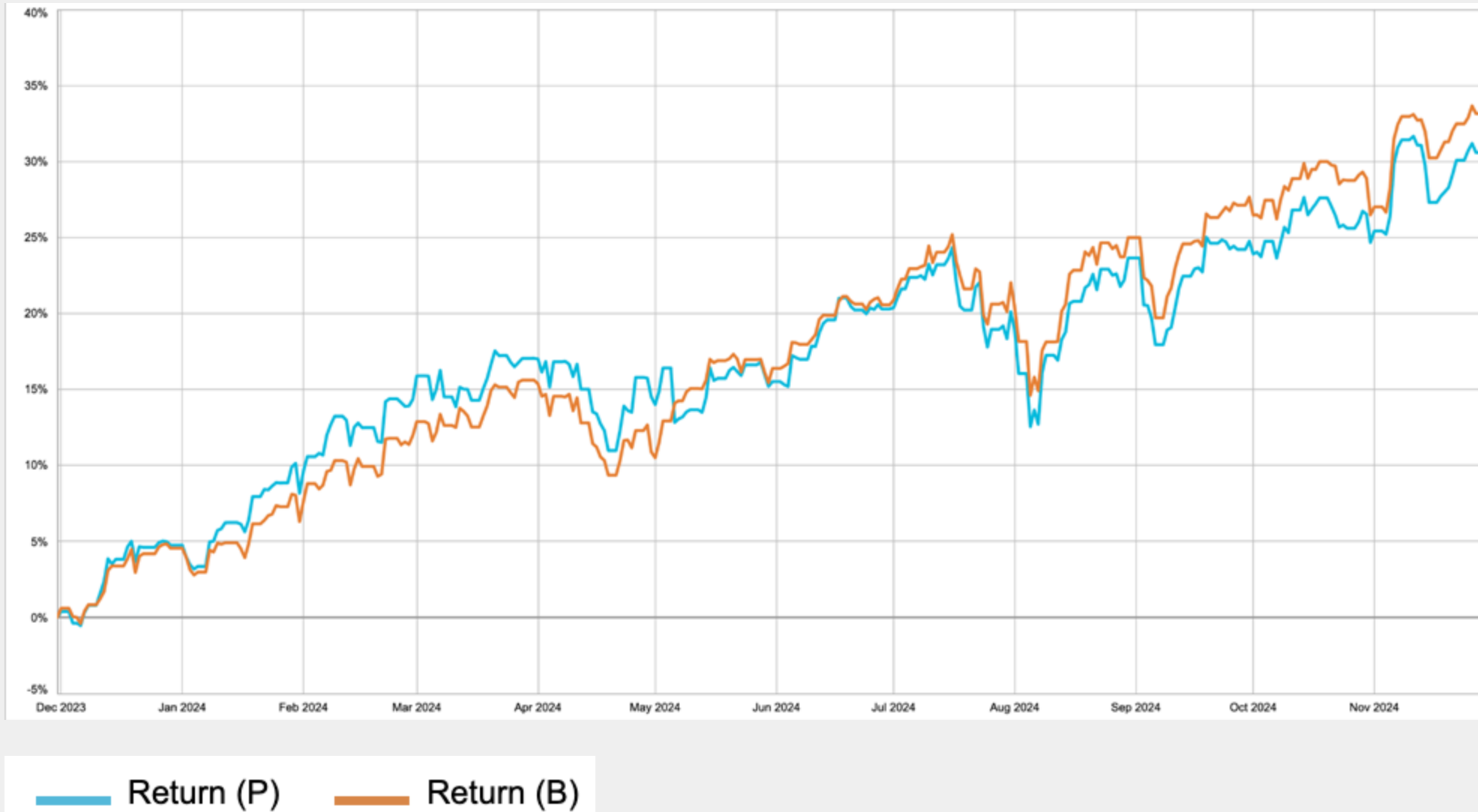
↑ 31.2% LTM Return	↑ 11.4% Annual average return	3.2% Alpha
------------------------------	---	----------------------

UAF SIF versus S&P 500	
Annual Win/Loss Record	51.72%
Monthly Win/Loss Record	50.0%



Financial Performance 1-year

November '23 - November '24



November '19 - November '24



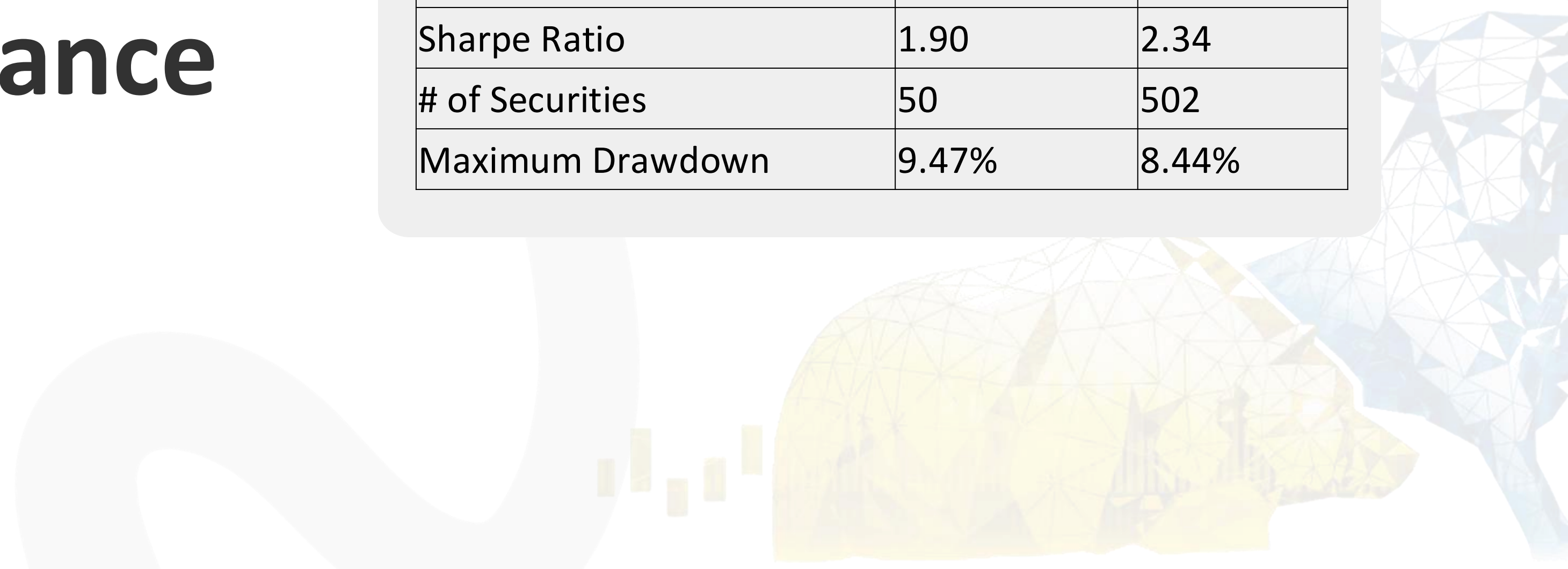
Return (P) Return (B)

Financial Performance 5-year

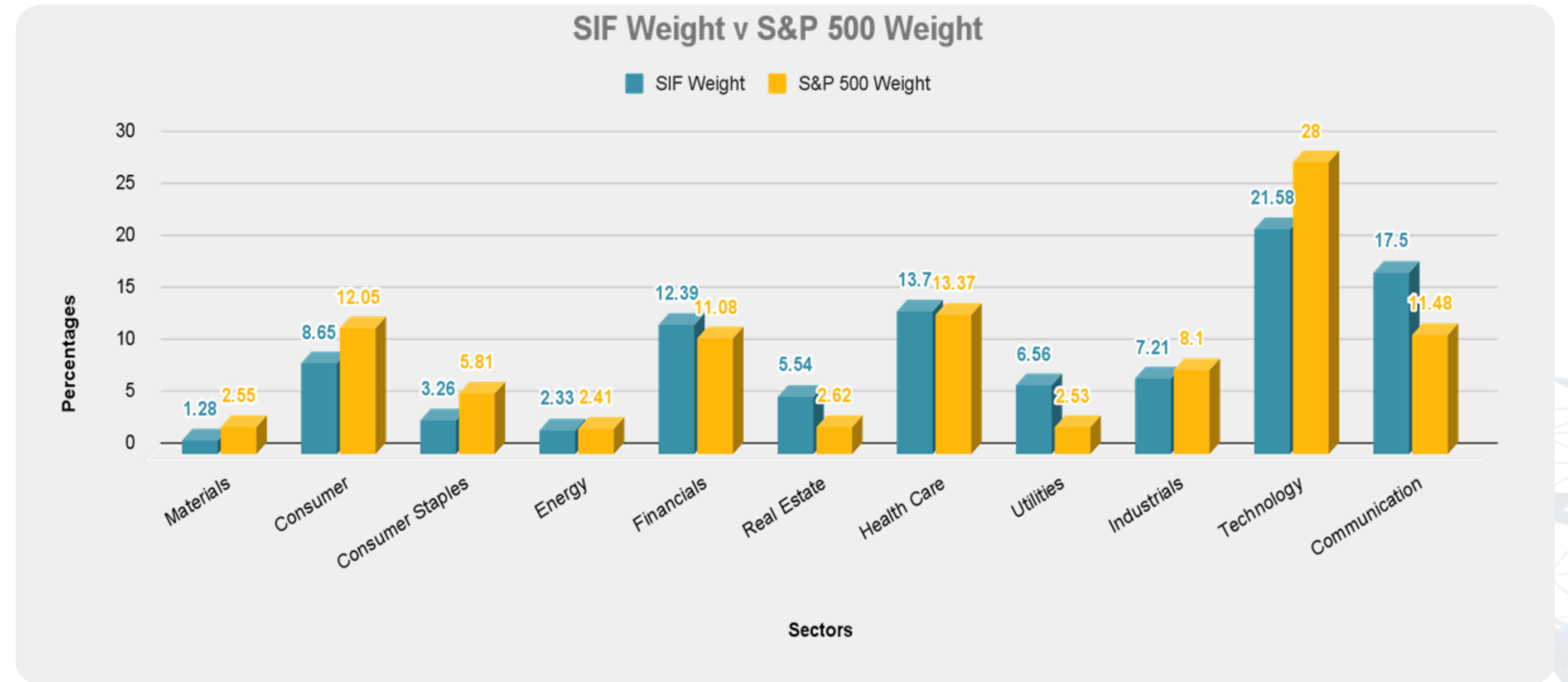


Last 12 months: Performance

	Portfolio	S&P 500
Return	31.25%	33.91%
Volatility (std)	13.72%	12.26%
Beta	1.01	n/a
Sharpe Ratio	1.90	2.34
# of Securities	50	502
Maximum Drawdown	9.47%	8.44%



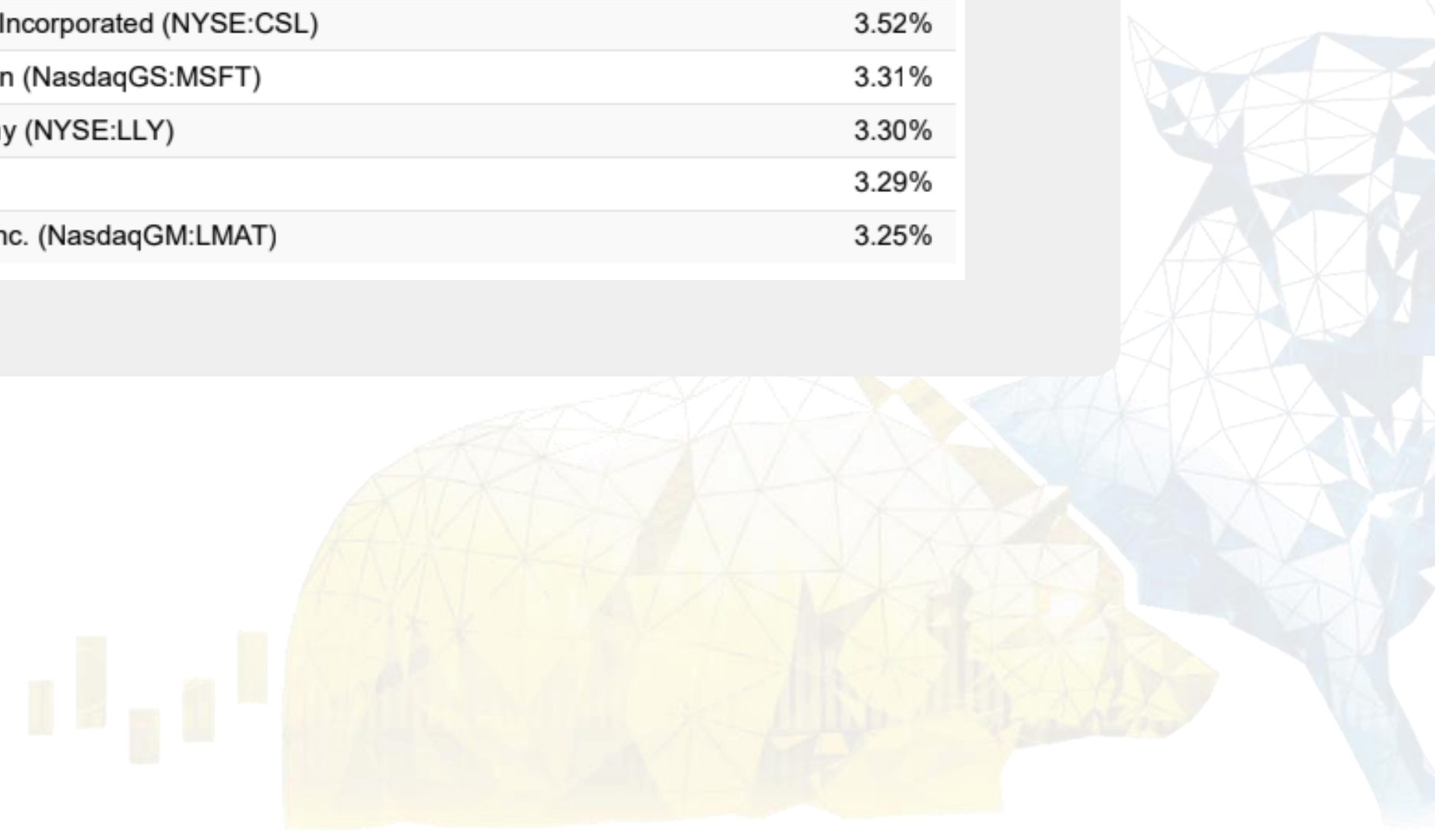
Sector Allocation



Top Holdings

Top 10 Securities by Weight

TOP	WEIGHT (P)
SPDR S&P 500 ETF Trust (ARCA:SPY)	6.09%
Alphabet Inc. (NasdaqGS:GOOGL)	4.89%
Synopsys, Inc. (NasdaqGS:SNPS)	4.78%
Costco Wholesale Corporation (NasdaqGS:COST)	4.72%
Pampa Energía S.A. (NYSE:PAM)	3.68%
Carlisle Companies Incorporated (NYSE:CSL)	3.52%
Microsoft Corporation (NasdaqGS:MSFT)	3.31%
Eli Lilly and Company (NYSE:LLY)	3.30%
Visa Inc. (NYSE:V)	3.29%
LeMaitre Vascular, Inc. (NasdaqGM:LMAT)	3.25%



Styles

The SIF portfolio has a slight value bias compared to the S&P 500

	Weight		Return	
	Port	Bench	Port	Bench
Total			31.25%	33.91%
Growth	48.44%	50.28%	36.93%	43.70%
Blend	29.57%	37.34%	37.64%	27.93%
Value	13.17%	11.55%	54.97%	18.15%
Deep Value	0.00%	0.83%	5.59%	7.67%



Transactions: Buys



BUY TRIM SELL



BUY TRIM SELL