

Buyer Information

Judging for 4-H & FFA Market Livestock is Sunday, July 28, 6:00 pm. This is a great time to come and see the livestock and showmen prior to the auction. Sale order in the auction will be based on order of placing in the market class, starting with Grand Champion and descending. This information will be available in the auction program.

Market livestock and their showmen will be available in the barns beginning at 4:00 pm on auction day. This is a great time to meet and talk to the youth who have raised these animals.

Prospective bidders must obtain a bidder card from the auction clerk prior to the start of the auction. Bids for large livestock will be placed in dollars and sold by the pound. Small livestock and goats will be bid by the pen or individually.

All market livestock will be sold to the highest bidder.

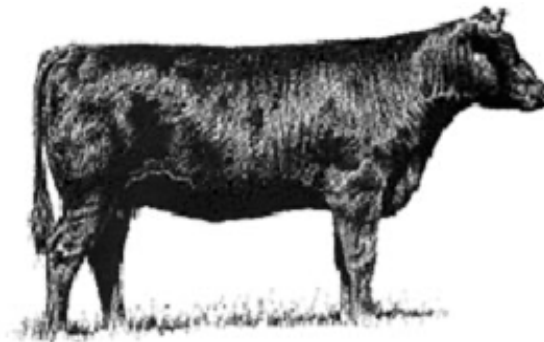


* There will be a photo session in the Delta Barn following the auction. All buyers and sellers are invited and encouraged to have their picture taken with the animals. A complementary picture will be sent to each buyer.

45th Annual 4-H & FFA Market Livestock Project Auction

is cooperatively sponsored by:

**Tanana District 4-H,
Alaska FFA Association,
Tanana Valley State
Fair Association
and the
Alaska Farm Bureau**



4-H & FFA



2024 Market Livestock Project Auction

Tanana Valley
State Fair

**Friday, August 2, 2024
6:00 p.m.**

Reception @ 5:00 p.m.

What the Market Livestock Project means to youth

The Market Livestock Program is an educational program for youth enrolled in 4-H & FFA. Involvement in market livestock projects helps our youth to:

- Develop leadership and responsibility
- Work cooperatively with others
- Gain knowledge and skills needed for quality livestock production
- Keep accurate records
 - (record books for each member's livestock projects will be available for viewing)
- Make management and business decisions
- Help sustain Alaskan agricultural enterprises



Thank you for supporting 4-H & FFA youth!

Language access services, such as interpretation or translation of vital information, will be provided free of charge to limited English proficient individuals upon request to amnorris2@alaska.edu. UAF is an Affirmative Action/Equal Opportunity employer, educational institution and provider and prohibits illegal discrimination against any individual: www.alaska.edu/nondiscrimination.

Yield of Market Livestock: How much meat will you get?

Live weight is what the animal weighs when you purchase it.

Carcass weight is what the animal weighs after the head, feet, viscera, blood, and hide are removed. This will amount to the following percentage of live weight for each species:

- Beef 60%
- Swine 70%
- Lamb 50%
- Goat 45-60%
- Rabbit 60%
- Turkey 75%
- Chicken 70-75%

Yield for freezer will be the actual pounds of meat after bone and fat are removed from the carcass. Percentage of carcass weight is:

- Beef 70% +/- 5%
- Swine 51% +/- 2%
- Lamb 45% +/- 5%

Examples:

- 1,150 lb. steer with carcass wt. of 690 lbs. Yields approx. 500 to 550 lbs. of edible meat.
- 220 lb. hog with carcass wt. of 154 lbs. Yields approx. 78 lbs. of edible meat.
- 120 lb. lamb with carcass wt. of 60 lbs. Yields approx. 27 lbs. of edible meat.

For more information please contact:

Marla Lowder Tanana Dist. 4-H Agent 474-2427

Slaughter Information:

Transportation, slaughter, cut, wrap and freeze charges are in addition to the purchase price of large animals. If you are handling your own meat processing, there will be no additional charges. Small animal exhibitors are required to deliver poultry and rabbits to buyers butchered and dressed within two weeks of fair unless another date has been agreed upon between the buyer and seller. **All prices are subject and could change.**

Local Processing Options:

Delta Meat & Sausage 1-800-794-4206	
Fully USDA Inspected Facility	
* Transportation and delivery available. Please call ahead.	
Beef up to 1200 lbs.	\$140 Slaughter
Above 1200 lbs.	\$165 Slaughter
Swine	\$95 Slaughter
Sheep/Goats	\$95 Slaughter
Beef cut & wrap	\$1.25 per lb.
Swine	\$1.30 per lb.
Goat/Lamb	\$2.30 per lb.
Smoking	\$2.30+ per lb.
Reindeer – call for slaughter and processing prices.	
* Cut and wrap prices are based off of hanging weight.	

AK's Midstate Meats 907-488-0124	
Fully USDA Inspected Facility	
*Free transportation.	
Beef	\$195 Slaughter
Swine	\$135 Slaughter
Sheep/Goats	\$140 Slaughter
Sheep/Goats cut and wrap	\$140
Beef cut & wrap	\$1.45 per lb.
Swine cut & wrap	\$1.45 per lb.
Curing hams and bacon	Please call
Reindeer – call for slaughter and processing prices.	