



BLOGS

Follow Toad Search Email this page

Blogs

Toad and Database Commentaries

Toad World blogs are a mix of insightful how-tos from Quest experts as well as their commentary on experiences with new database technologies. Have some views of your own to share? Post your comments! Note: Comments are restricted to registered Toad World users.

Do you have a topic that you'd like discussed? We'd love to hear from you. [Send us your idea for a blog topic.](#)

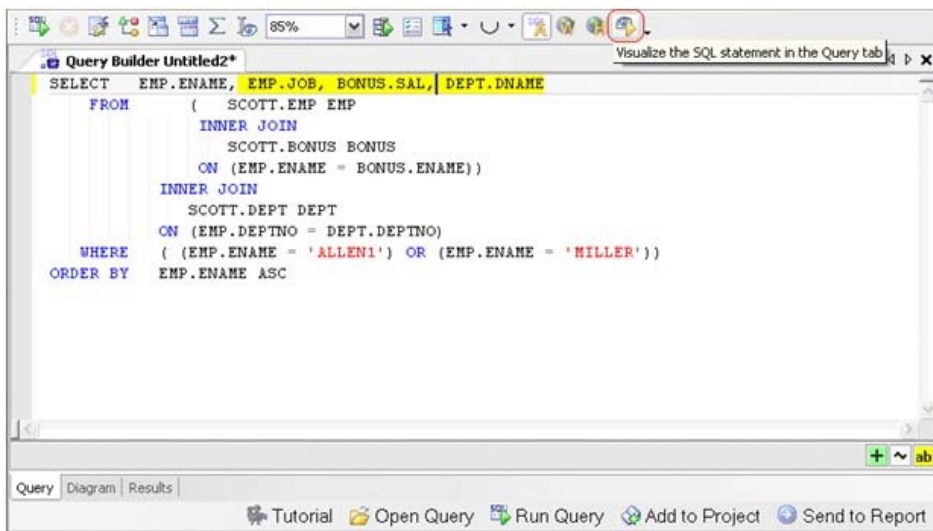
Reverse Engineer a SQL Query

Location: [Blogs](#) ▶ [Daniel Norwood's Blog](#)
dnorwood

8/24/2009 8:30 PM

The Query Builder in Toad for Data Analysts allows you to enter a SELECT statement in the Query tab and reverse engineer it into a visual representation on the Diagram tab. This can be very useful when migrating existing queries to Toad or when you just want to use the visual layout to better understand how a query is structured.

To begin, open a new Query Builder document and switch to the "Query" tab (lower left). Next, simply type or paste a SELECT statement into the editor. *(Oracle users: make sure that the ANSI SQL button on the toolbar is turned OFF if you're using the standard Oracle syntax to join your tables!)* Finally, click on the "Visualize SQL Statement" button to have Toad for Data Analysts draw a diagram of the objects and relations in your SQL query. Simply switch to the "Diagram" tab to see your query represented in a visual form. Now you can edit your query in either the Diagram tab or the Query tab, giving you great flexibility in editing your query.



If you have an existing SQL query file saved to your hard drive, here's a shortcut: you can open it in the SQL Editor and right-click to send the SQL to the Query Builder where it will be reverse engineered automatically. This is an easy way to port your SQL queries into a common visual format for use as a collaborative resource.

Search Blog Entries

All Blogs

Keywords Phrase

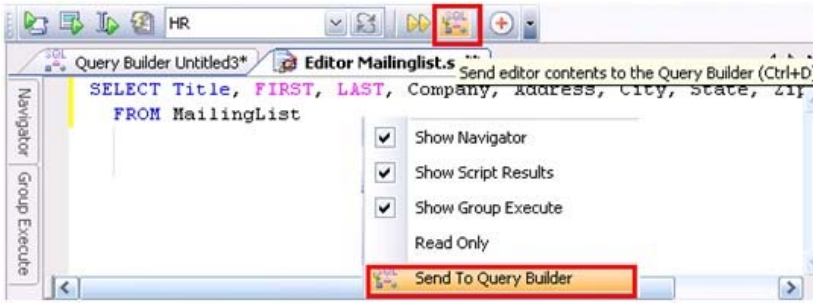
Most Popular

- [Introducing a new free utility - SQL Monitor](#)
- [Must Know Features of PL/SQL](#)
- [Update your Excel Reports - Automatically](#)
- [Toad Tips and Tricks](#)
- [A sneak peak at Toad V10](#)
- [Team Coding???](#)
- [Run Toad Freeware on Linux](#)
- [PL/SQL on DB2 9.7?](#)
- [Toad for Oracle SQL Editor](#)

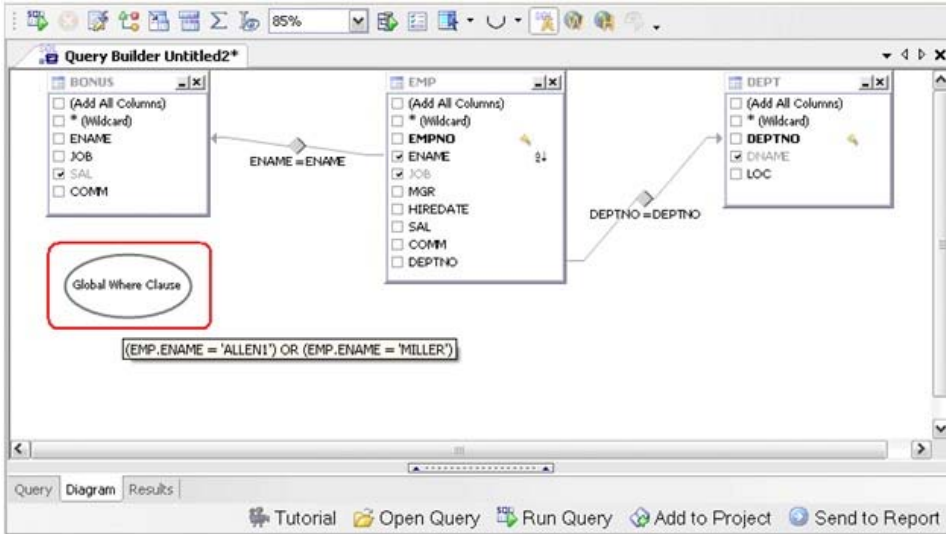
Blogger and Topic List

All Recent Blog Entries

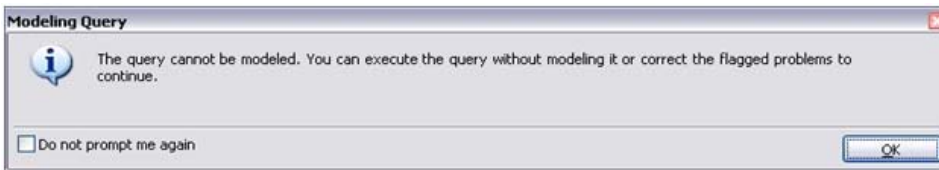
- [Johannes Ahrends](#)
Unicode and Toad
- [Ben Boise](#)
Toad SC Discussions
- [Kevin Dalton](#)
Benchmark Factory
- [Steven Feuerstein](#)
Oracle PL/SQL
- [Devin Gallagher](#)
Toad SC discussions
- [Stuart Hodgins](#)
JProbe Discussions
- [Henrik "Mauritz" Johnson](#)
Toad Tips & Tricks on the "other" Toads
- [Mark Kurtz](#)
Toad SC discussions
- [Michael Lumbard](#)
Toad SC discussions
- [Daniel Norwood](#)
Toad for Data Analysts
- [John Pocknell](#)
Toad for Oracle
- [Kuljit Sangha](#)
Toad SC discussions
- [Bert Scalzo](#)
Toad for Oracle, Data Modeling, Benchmarking
- [Jeff Smith](#)
Toad product family
- [Richard To](#)
SQL Optimization



Though Toad will reverse engineer most of the SQL syntax that you have, there are times when some of the SQL syntax may not be visually represented when it's reversed engineered. When this occurs, a Global Where Clause object is added to the visual editor, containing the logic of that specific clause in your SQL statement. The Global Where Clause can still be edited by double-clicking on the object or by clicking the Global Where or Global Having buttons on the toolbar.









If you have errors in the SELECT statement, they will be flagged in the editor and added to the Output window. A dialog will also appear, informing you of the error.



Note: By default the Query Builder uses ANSI joins. Sending a non-ANSI join query to the Query Builder will put the WHERE condition into the Global Where Clause. If you change the join type to non-ANSI join, make a change, and press the "Visualize query" action it will build the query.

[Permalink](#) | [Trackback](#)

Comments (0)

-  [Jim Wankowski](#)
DB2 - LUW and z/OS
-  [John Weathington](#)
Compliance
-  [Doug Williams](#)
LEO's Den
-  [Toad World Editor](#)
Toad World issues
-  [Toad Data Modeler](#)
Data Modeling
-  [Real Automated Code Testing for Oracle](#)
Quest Code Tester blog

View Blog Archives

October 2009						
Sun	Mon	Tue	Wed	Thu	Fri	Sat
27	28	29	30	1	2	3
4	5	6	7	8	9	10
11	12	13	14	15	16	17
18	19	20	21	22	23	24
25	26	27	28	29	30	31
1	2	3	4	5	6	7

View Entries by Month:

- [October, 2009](#)
- [September, 2009](#)
- [August, 2009](#)
- [July, 2009](#)
- [June, 2009](#)
- [May, 2009](#)
- [April, 2009](#)
- [March, 2009](#)
- [February, 2009](#)
- [January, 2009](#)
- [December, 2008](#)
- [November, 2008](#)
- [October, 2008](#)
- [September, 2008](#)
- [August, 2008](#)
- [July, 2008](#)
- [June, 2008](#)
- [May, 2008](#)
- [April, 2008](#)
- [March, 2008](#)
- [February, 2008](#)
- [January, 2008](#)
- [December, 2007](#)
- [November, 2007](#)
- [October, 2007](#)
- [September, 2007](#)
- [August, 2007](#)
- [July, 2007](#)
- [June, 2007](#)
- [May, 2007](#)
- [April, 2007](#)
- [March, 2007](#)
- [February, 2007](#)
- [January, 2007](#)
- [December, 2006](#)
- [November, 2006](#)
- [October, 2006](#)
- [August, 2006](#)