



Biweekly Newsletter

FACILITIES FORUM

29 May 2024



PHOTO BY TODD PARIS

Past Progress, Future Prospects: A Recap and Look Ahead!

Dear Members of Facilities Services,

Welcome to the latest edition of our Facilities Forum! Within these digital pages, we're excited to dive into the heartbeat of our Purpose: the constant care and enhancement of UAF and all its facets. From the people who bring life to our community to the very structures that house our ambitions, this newsletter serves as a conduit for sharing the stories, updates, and achievements that shape our collective journey.

Join us as we explore the latest developments, celebrate milestones, and highlight the tireless efforts of those who work non-stop to uphold the standards of excellence that define our institution.

Thank you for being a part of Facilities Services. Together, we propel UAF forward.

Facilities team x

In this newsletter you can expect:

Kuskokwim Campus

Patty Pool Progress

Announcements

Current Recruitments

Patty Sauna Benches



Breakup at the Kuskokwim Campus



by Benjamin Johnson

This April I traveled to Bethel for my annual facility visit. For those not aware Bethel is located about 50 miles from the mouth of the Kuskokwim River, the original name being *Mamterilleq*, which was a summer fishing site meaning “site of many caches”. Together with our onsite technician Ron Kaiser, we looked at their concerns around the campus. The major work this summer will be occurring at KU101, which will be the Yupik Health Sciences Building, and DDC will manage this project.

Lift Stations

Parts of the building system do the heavy lifting, especially the lift stations for the campus. Many of these systems were installed in the 1980s and 1990s and due for life cycle replacement. The sanitation systems for Bethel are pressurized as



the terrain is flat, swampy, and unsuitable for below-ground systems. The city's water, sewer, and district heating loop are all located above ground. Just another way rural Alaska differs from life in town.

Water, Water Everywhere...

The weather steadily warmed up each day I was there making the wetlands around the campus more like a lake each day. Around Sackett Hall, The water is usually some distance from the

building. During this breakup season, it wrapped around the building on all sides and even flooded underneath the dorm. We hope to address some of these issues in the near future. Life in Rural Alaskan communities works in ways and sometimes nature is literally right there.



Patty Pool Progress Photos



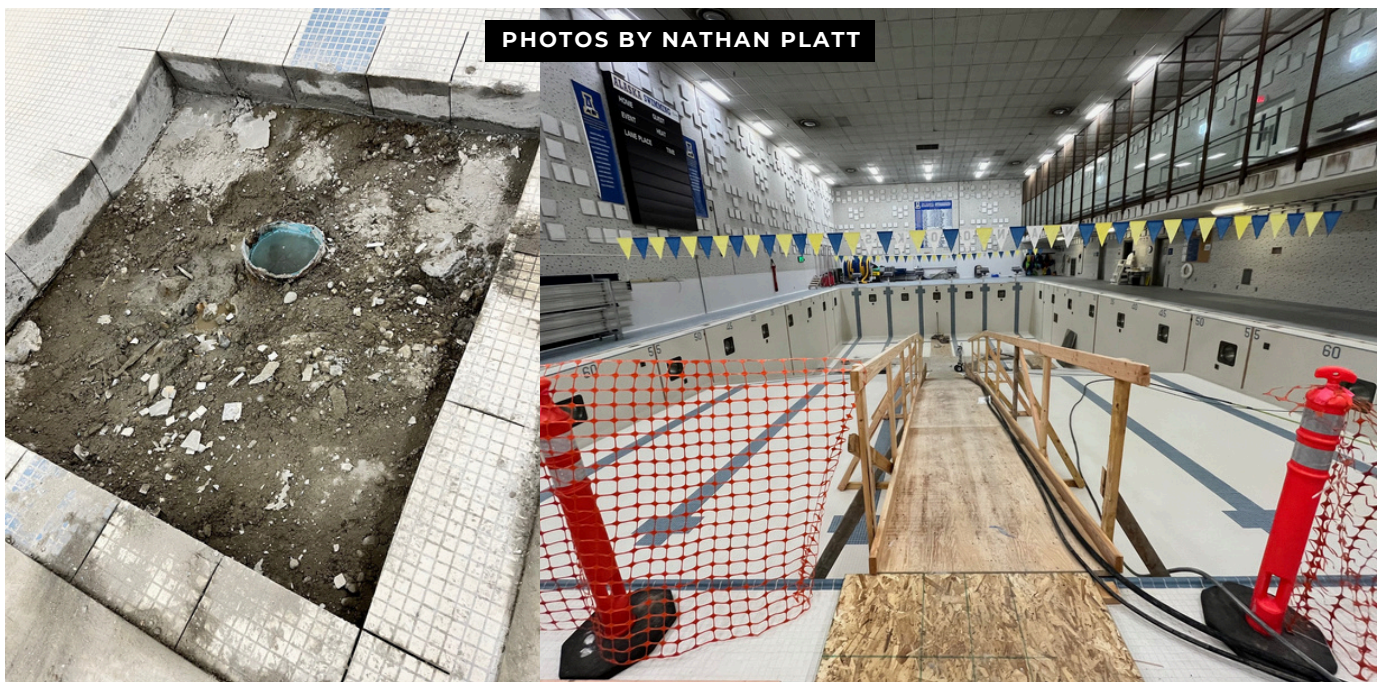
For the past few years, we've been dealing with a leak from the bottom drains of the Patty pool. We tried to install an epoxy sleeve a couple of years ago, but it failed. This summer, we're trenching the bottom of the pool and putting in all new drain pipes.

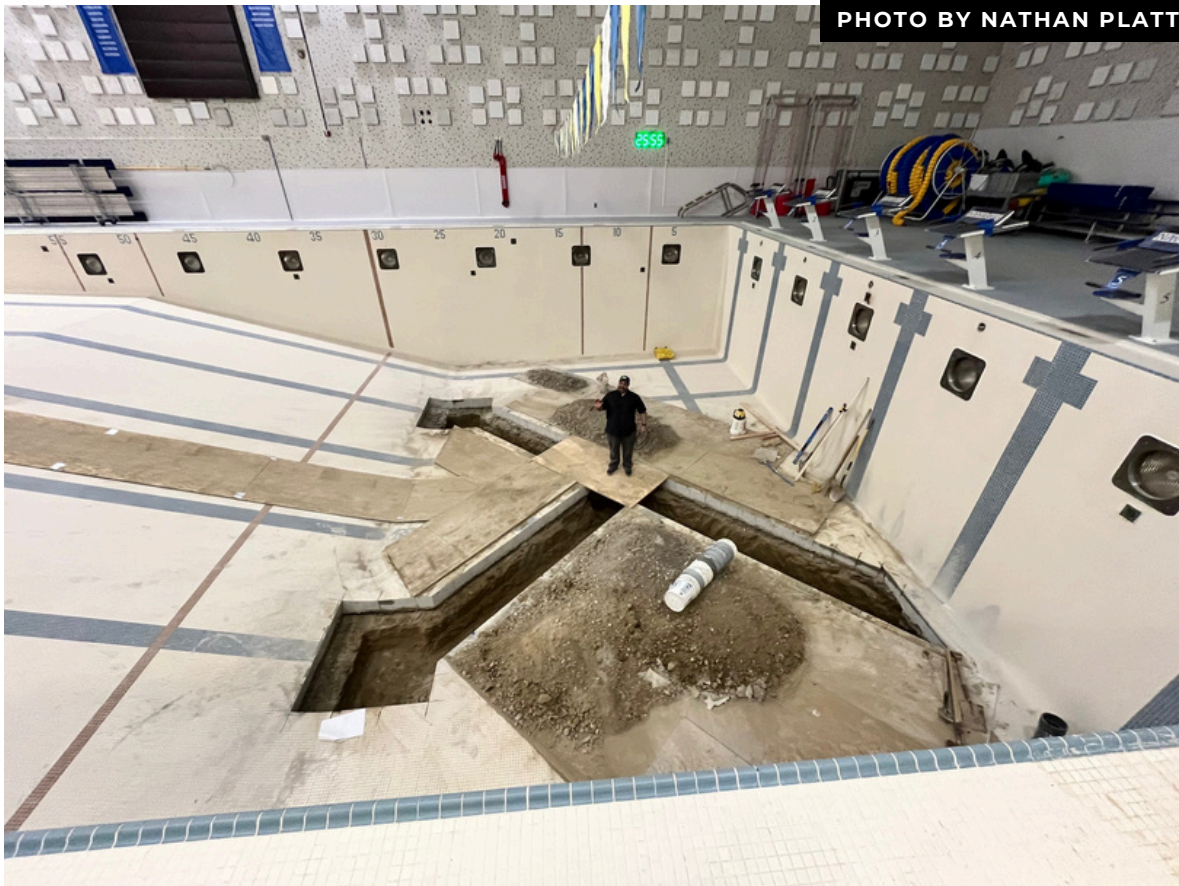
Top Left: Chunks of the old pool bottom. You can see the tile on the faces of this concrete, which turns out to be 10" thick. Each of these pieces weigh 180 pounds.

Top Right: The pool bottom drain.

Bottom Left: The bottom drain cut out. You can see the blue epoxy sleeve we installed a couple of years ago.

Bottom Right: The contractor (Trost) built a great ramp into the bottom of the pool to make it easier to get the chunks of concrete out.





Another picture of the bottom of the pool. The old drain line has been removed. The new drains will be installed soon, then the concrete will be re-poured and the tile replaced.

Marty Pahkamaa for scale.

Announcements

Reminder - End of FY24 Work Order close out

Performance Evaluations - Talk with your supervisor ASAP

Ice Cream Thursdays! - May 23 to Aug 1 - noon to 2pm @ Arctic Java

LARS annual Birthday Bash from noon to 4pm on June 1

Current Recruitments

[Senior Mechanical Engineer](#)

[Painter/Maint Mechanic](#)

[Locksmith](#)

[FS Pool Tech](#)

[Building Tech Kodiak](#)

[Facilities Inspector](#)

[Mechanical Engineer](#)

[Maintenance Plumber](#)

[Contract Manager](#)

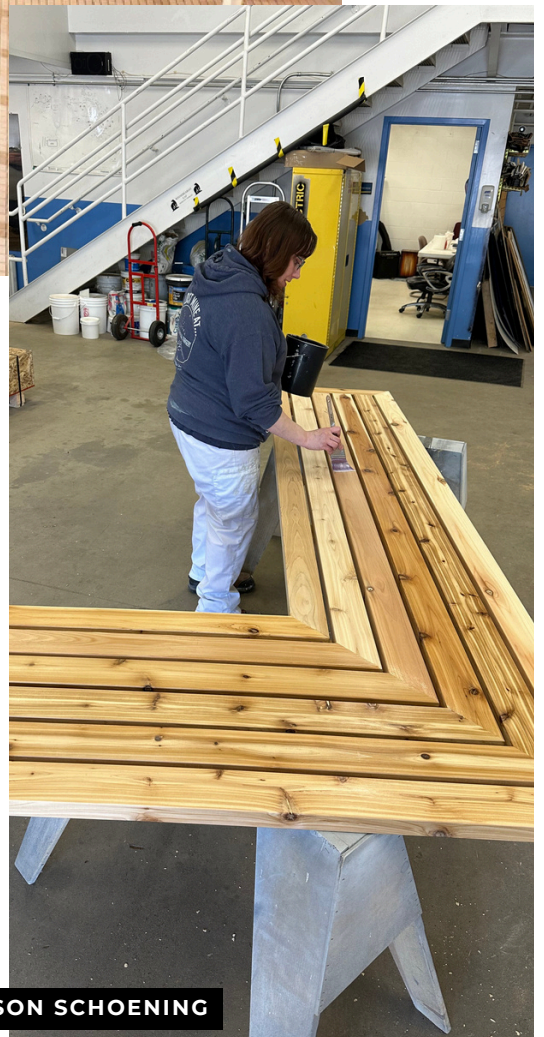
[CT3 Electrician -Utilities](#)

[Alarms Tech Trainee](#)

Patty Sauna Benches



This rebuilt Patty sauna seating was installed before the steam outage ended so that the saunas would be ready when they went back into operation again. Such beautiful work!
Right: Sarah Nonamaker applying finish.



PHOTOS BY JASON SCHOENING

Thank you for reading!



UAF is an AVEO employer and educational institution and prohibits illegal discrimination against any individual: www.alaska.edu/nondiscrimination/.