

Pasta Skeletons

Imagine the bones inside an animal!

Materials Needed:

Animal Template printable (or draw your own), dry pasta or noodles in different shapes (spaghetti, elbows, shells, penne, farfalle, etc.), scissors, crayons. *Optional:* Liquid glue.



Instructions:

Step 1: Choose an animal. You can print the salmon or snowshoe hare templates, or choose a different animal and draw their outline.

Step 2: Cut out the animal outline. Imagine how the animal looks inside, under skin, fur, scales, or feathers. Color your animal with crayons.

Step 3: Imagine the bones inside the animal. Use dry pasta in different shapes to create a skeleton for the animal. Make a backbone and ribs, then imagine where larger bones might be. Simply place the pasta pieces on the colored template, or use liquid glue to make a more permanent design.



Extension:

Find images of different animal skeletons, and make several animals inspired by these images. Compare your pasta skeletons. How does the skeleton help each animal adapt to their environment, eat different foods, or defend themselves from predators?

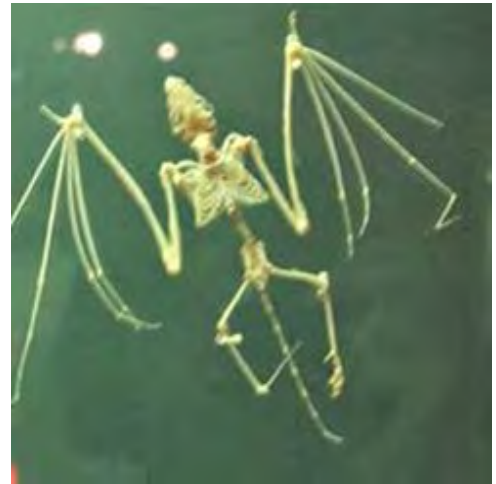
Explore Skeletons

What are skeletons?

Bones make up the skeletons of many animals, called *vertebrates*. The skeleton supports the body, allows it to move, and protects organs such as the brain, lungs, and stomach. Humans, bears, moose, salmon, chickadees, voles, bats, and frogs are just a few examples of animals with skeletons. Can you think of more?

Skeletons help us learn about animal adaptations

Skeletons are adapted to help each animal survive in their environment. Compare the bowhead whale and bat skeletons (on exhibit at UAMN).



From looking at the skeletons, can you tell if these animals walk, swim, or fly? How are their skeletons different? How are they similar?

Watch a video about preparing the bowhead whale skeleton for exhibit:

www.youtube.com/watch?v=s56DeouNg0E



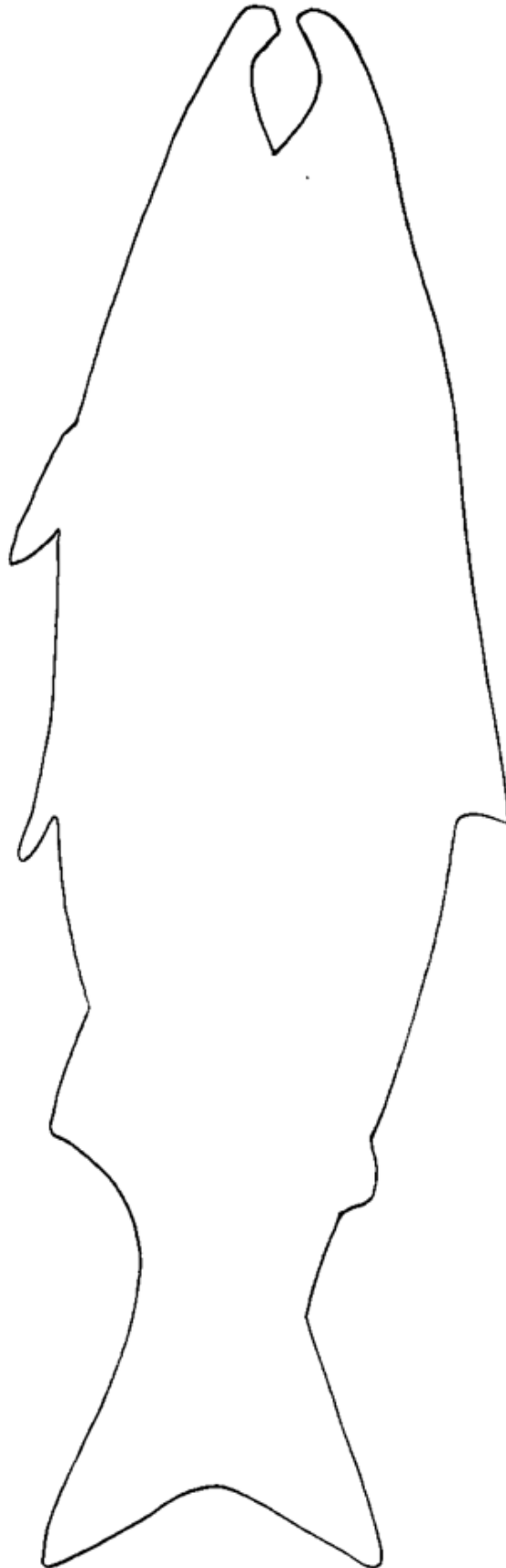
Bones help us learn about the past

When the conditions are just right, bones can fossilize and stay preserved underground for thousands or millions of years.

Paleontologists find the fossils of extinct animals, such as dinosaurs. Although these ancient animals no longer roam the earth, their skeletons give us clues about how they looked, how long ago they lived, what kinds of food they ate, how they moved, and much more.

Salmon Template Printable

Print and color. Create a skeleton with pasta shapes.



Snowshoe Hare Template Printable

Print and color. Create a skeleton with pasta shapes.

